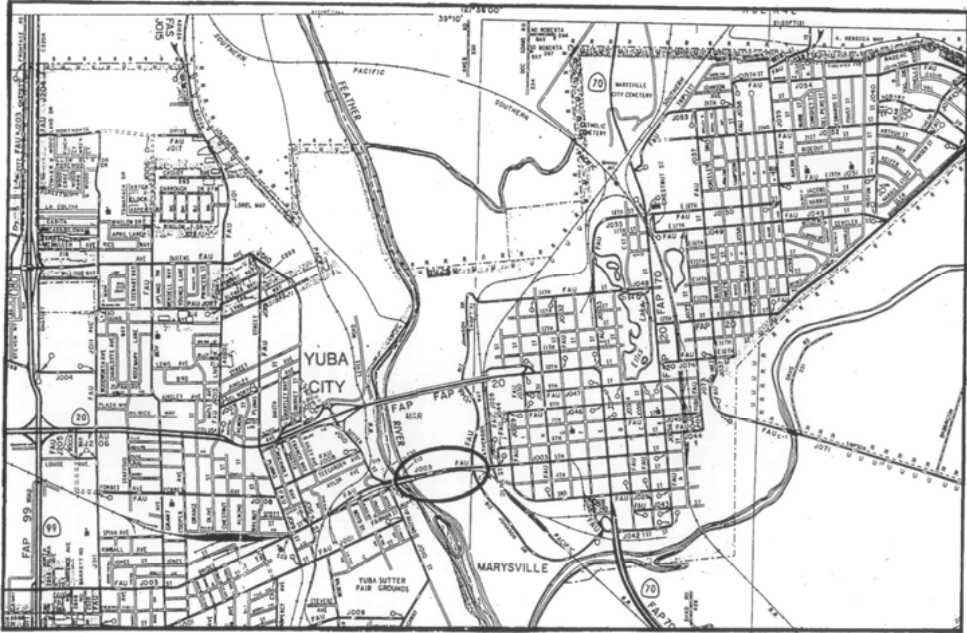
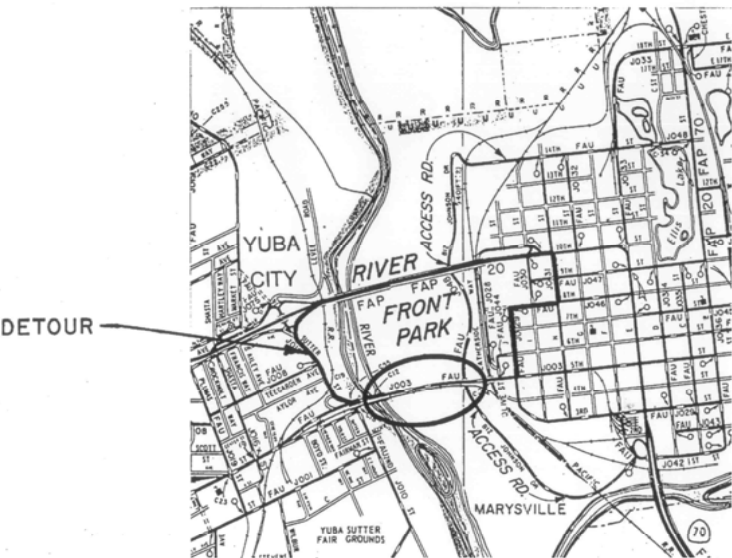


COUNTY OF SUTTER
DEPARTMENT OF PUBLIC WORKS
PROJECT PLANS FOR CONSTRUCTION



LOCATION MAP



ACCESS AND DETOUR LOCATIONS

SEISMIC RETROFIT PROJECT C22
FEATHER RIVER @ 5th STREET BRIDGE

CONTRACT NO. B01-93

FED. PROJ. NO. STPLNZ 5918 (007)

TO BE SUPPLEMENTED BY STATE OF CALIFORNIA DEPARTMENT OF TRANSPORTATION
STANDARD PLANS AND SPECIFICATIONS DATED JULY, 1992

INDEX OF SHEETS

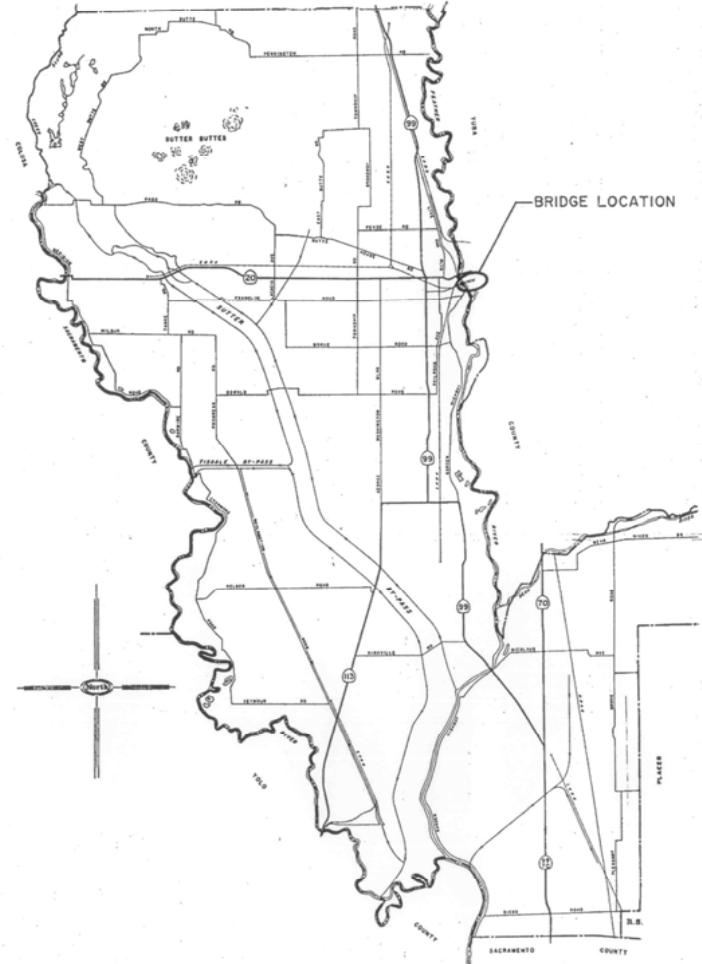
SHEET NO.	TITLE
1	GENERAL PLAN
2	ABUTMENTS A, C & 1 RETROFIT
3	ABUTMENT 22 RETROFIT
4	PIER RETROFIT TYPE I
5	PIER RETROFIT TYPE II
6	CABLE RESTRAINER ASSEMBLY TYPE A
7	CABLE RESTRAINER ASSEMBLY TYPE B
8	LONGITUDINAL SHEAR BLOCK

THE CONTRACTOR SHALL POSSESS A CLASS "A" LICENSE OR A COMBINATION OF CLASSES REQUIRED BY THE CATEGORIES AND TYPE OF WORK INCLUDED IN THIS CONTRACT, AT THE TIME THIS CONTRACT IS AWARDED.

CONTRACTOR: STEWART CONTRACTING, INC.

COMPLETED: 8-17-94

APPROVED: _____ DATE _____



VICINTY MAP

AS BUILT
CORRECTIONS BY Hemul Patel
CONTRACT NO. B01-93/03-4509/4
DATE 8-26-94

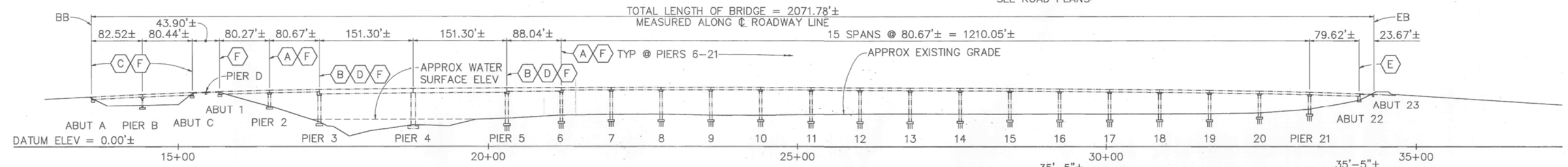


APPROVED [Signature] DATE 6/10/93
ASST. DIRECTOR PUBLIC WORKS RCE 31840 EXP. 12/31/96

- NOTES:**
- ① INDICATES SECTION NO.
 - ② INDICATES SHEET NO. SHOWN ON
 - ③ INDICATES DETAIL NO.
 - ④ INDICATES SHEET NO. SHOWN ON
 - FOR GENERAL NOTES, SEE 'ABUTMENT 22 RETROFIT' SHEET
 - — — — — INDICATES EXISTING STRUCTURE
 - FOR UTILITIES AND TRAFFIC STAGING, SEE ROAD PLANS

DIST	COUNTY	ROUTE	POST MILES TOTAL PROJECT	SHEET NO.	TOTAL SHEETS
03	Yub	LOCAL			

REGISTERED CIVIL ENGINEER
John M. Vincent 12/92
 No. C45355
 Exp. 9-30-94
 PLANS APPROVAL DATE
 BIGGS CARDOSA ASSOCIATES INC.
 1871 THE ALAMEDA, SUITE 200
 SAN JOSE, CALIFORNIA 95126

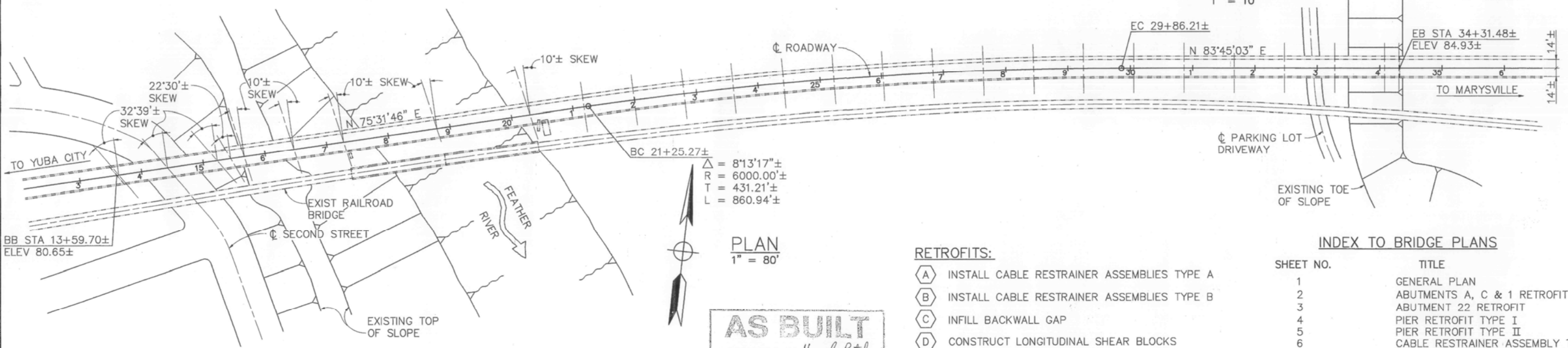
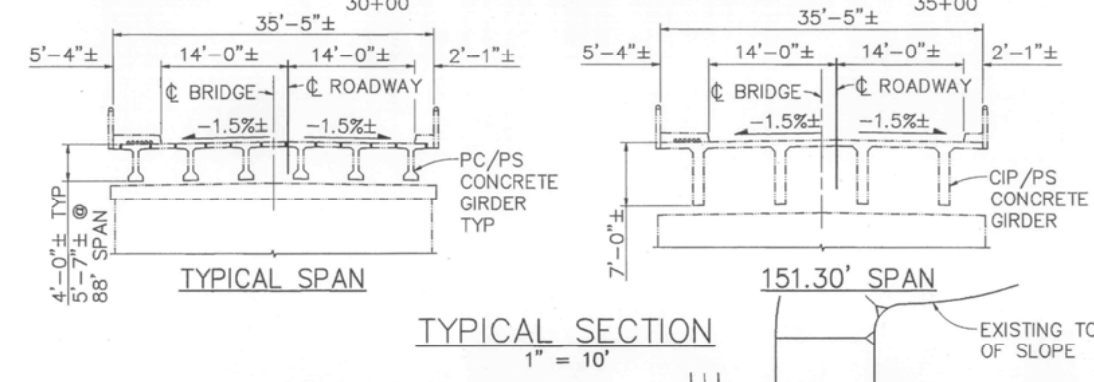


APPROXIMATE QUANTITIES

BRIDGE REMOVAL (PORTION)	LUMP SUM
DRILL & BOND DOWEL (EPOXY CARTRIDGE)	32 LF
DRILL & BOND DOWEL	863 LF
CORE CONCRETE (3")	429 LF
CORE CONCRETE (5")	9 LF
CORE CONCRETE (6")	32 LF
CORE CONCRETE (7")	12 LF

FINAL PAY QUANTITIES

STRUCTURAL CONCRETE, BRIDGE	71 CY
BAR REINFORCING STEEL (BRIDGE)	12,173 LBS
TREATED LUMBER & TIMBER	2.45 MBFM
MISCELLANEOUS METAL (BRIDGE)	2,661 LBS
MISCELLANEOUS METAL (RESTRAINER)	9,469 LBS



AS BUILT
 CORRECTIONS BY *Hemul Patel*
 CONTRACT NO. 801-93/03-450914
 DATE 8-26-94

- RETROFITS:**
- ① INSTALL CABLE RESTRAINER ASSEMBLIES TYPE A
 - ② INSTALL CABLE RESTRAINER ASSEMBLIES TYPE B
 - ③ INFILL BACKWALL GAP
 - ④ CONSTRUCT LONGITUDINAL SHEAR BLOCKS
 - ⑤ ABUTMENT 22 RETROFIT
 - ⑥ CONSTRUCT TRANSVERSE SHEAR KEYS

INDEX TO BRIDGE PLANS

SHEET NO.	TITLE
1	GENERAL PLAN
2	ABUTMENTS A, C & 1 RETROFIT
3	ABUTMENT 22 RETROFIT
4	PIER RETROFIT TYPE I
5	PIER RETROFIT TYPE II
6	CABLE RESTRAINER ASSEMBLY TYPE A
7	CABLE RESTRAINER ASSEMBLY TYPE B
8	LONGITUDINAL SHEAR BLOCK

NOTE:
 THE CONTRACTOR SHALL VERIFY ALL CONTROLLING FIELD DIMENSIONS BEFORE ORDERING OR FABRICATING ANY MATERIAL

DESIGN BY M. A. THOMAS	CHECKED S. A. METZLER	LOAD FACTOR DESIGN BY M. A. THOMAS	CHECKED S. A. METZLER	PREPARED FOR THE STATE OF CALIFORNIA DEPARTMENT OF TRANSPORTATION	BRIDGE NO. 18-C012	POST MILE LOCAL	SEISMIC RETROFIT PROJECT C22
DETAILS BY M. A. THOMAS	CHECKED S. A. METZLER	LAYOUT BY M. A. THOMAS	CHECKED S. A. METZLER	JOHN M. VINCENT PROJECT ENGINEER			FEATHER RIVER @ 5th STREET BRIDGE
QUANTITIES BY A. P. NOTARO	CHECKED T. C. RODDEN	SPECIFICATIONS BY T. L. SWAYZE	PLANS AND SPECS COMPARED J. M. VINCENT				GENERAL PLAN
DESIGN OVERSIGHT 1-11-93							REVISION DATES (PRELIMINARY STAGE ONLY)
SIGN OFF DATE							SHEET 1 OF 8

ORIGINAL SCALE IN INCHES FOR REDUCED PLANS: 0 1 2 3

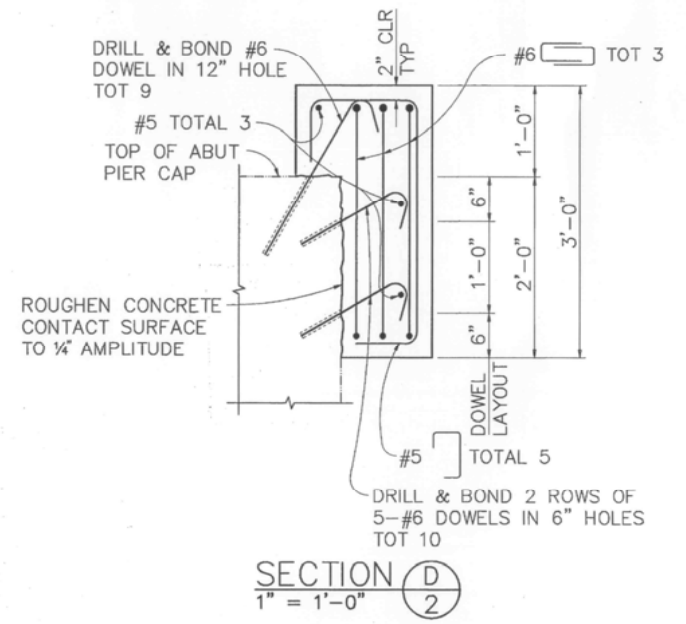
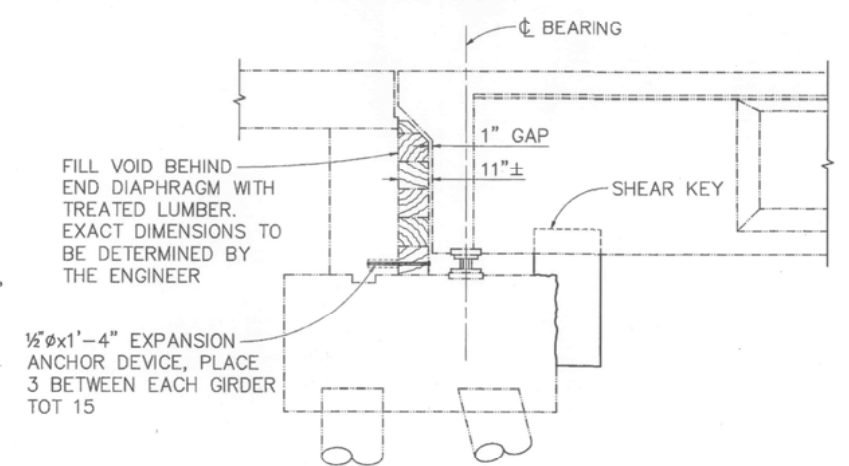
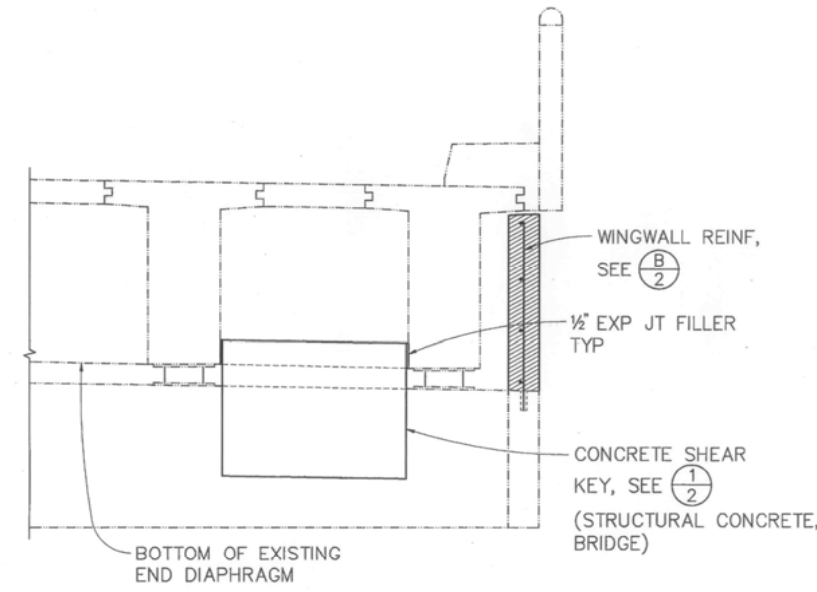
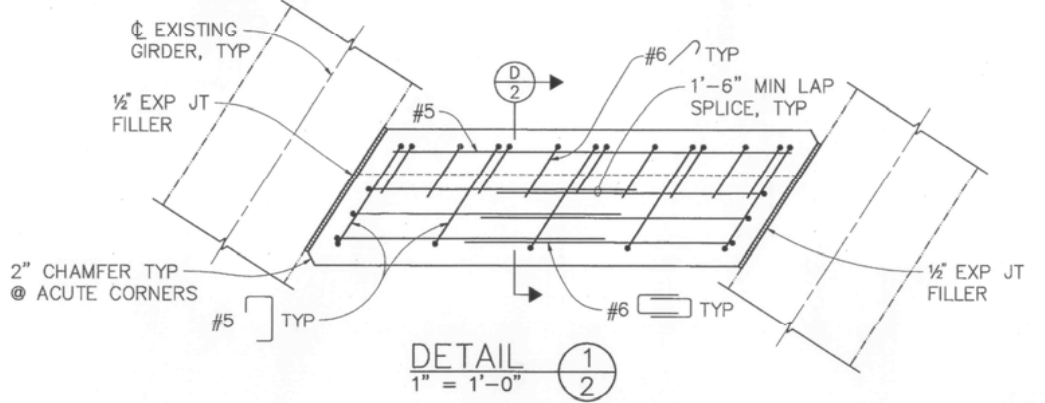
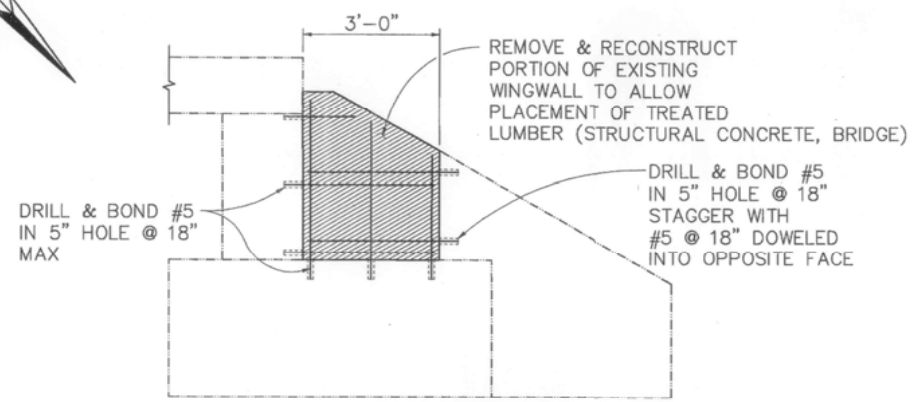
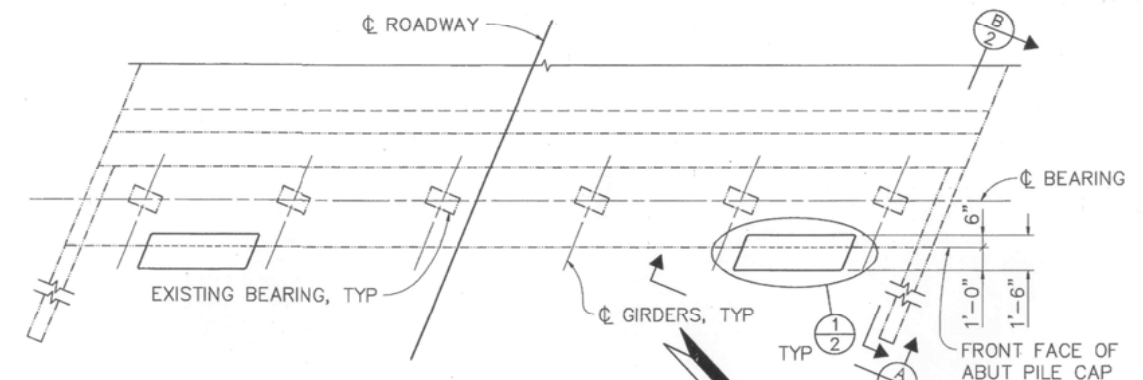
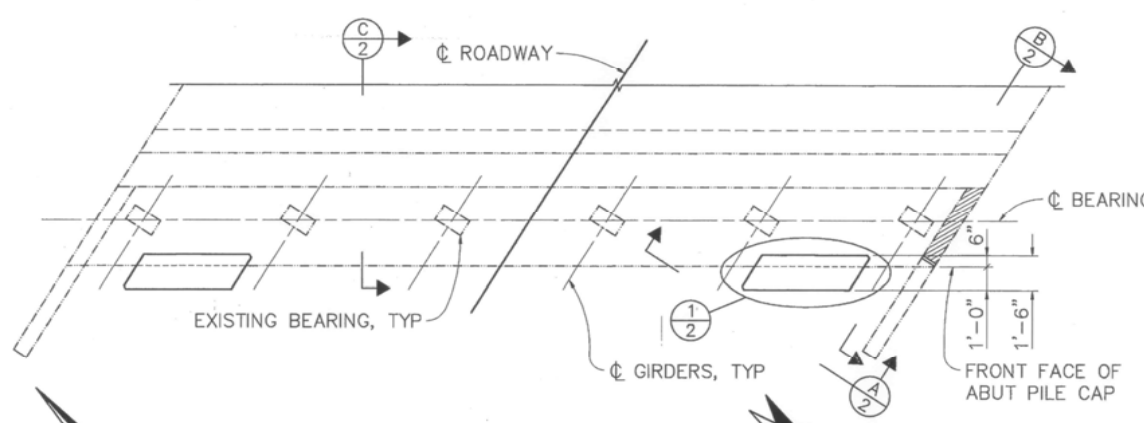
CU 59M497-2 EA 03-EQC022

DISREGARD PRINTS BEARING EARLIER REVISION DATES

DIST	COUNTY	ROUTE	POST MILES TOTAL PROJECT	SHEET NO.	TOTAL SHEETS
03	Yub	LOCAL			

John M. Vincent 12/7/92
 REGISTERED CIVIL ENGINEER
 No. C45355
 Exp. 9-30-94
 CIVIL ENGINEER
 STATE OF CALIFORNIA

BIGGS CARDOSA ASSOCIATES INC.
 1871 THE ALAMEDA, SUITE 200
 SAN JOSE, CALIFORNIA 95126



AS BUILT
 CORRECTIONS BY *Hemul Patel*
 CONTRACT NO. B01-93/03-450914
 DATE 8-26-94
 NO CHANGES

NOTE:
 THE CONTRACTOR SHALL VERIFY ALL CONTROLLING FIELD DIMENSIONS BEFORE ORDERING OR FABRICATING ANY MATERIAL

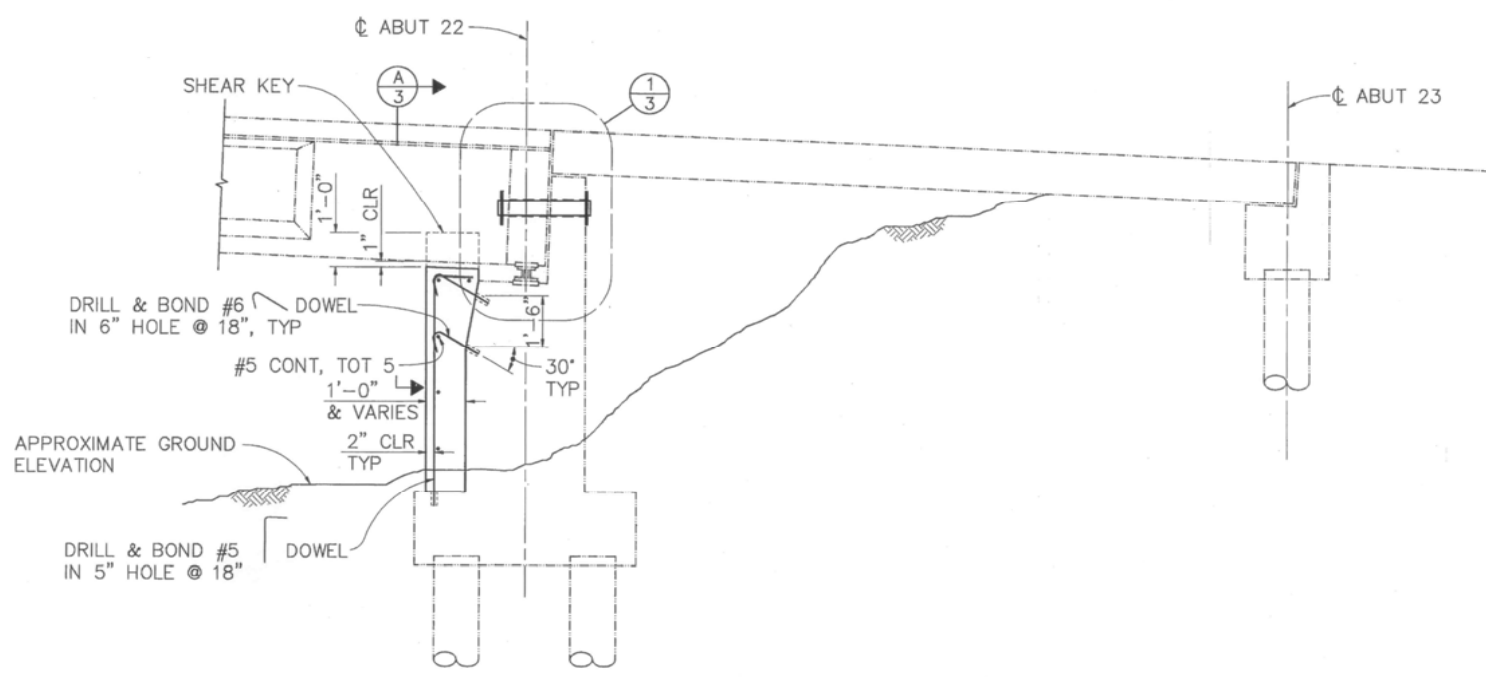
[Hatched Area] INDICATES PORTION OF BRIDGE TO BE REMOVED ABUTMENTS A & C ONLY

DESIGN BY S. J. CARTER CHECKED J. K. NORRENA DETAILS BY M. A. THOMAS CHECKED S. A. METZLER QUANTITIES BY A. P. NOTARO CHECKED T. C. RODDEN	PREPARED FOR THE STATE OF CALIFORNIA DEPARTMENT OF TRANSPORTATION	JOHN M. VINCENT PROJECT ENGINEER	BRIDGE NO. 18-CO12 POST MILE LOCAL	SEISMIC RETROFIT PROJECT C22 FEATHER RIVER @ 5th STREET BRIDGE ABUTMENTS A, C & 1 RETROFIT	
	ORIGINAL SCALE IN INCHES FOR REDUCED PLANS 0 1 2 3	CU 59M497-2 EA 03-EQC022	DISREGARD PRINTS BEARING EARLIER REVISION DATES	REVISION DATES (PRELIMINARY STAGE ONLY) 5/20/92 5/20/92 12/14/92	SHEET 2 OF 8
	Michael Jullon DESIGN OVERSIGHT 1-10-93 SIGN OFF DATE				

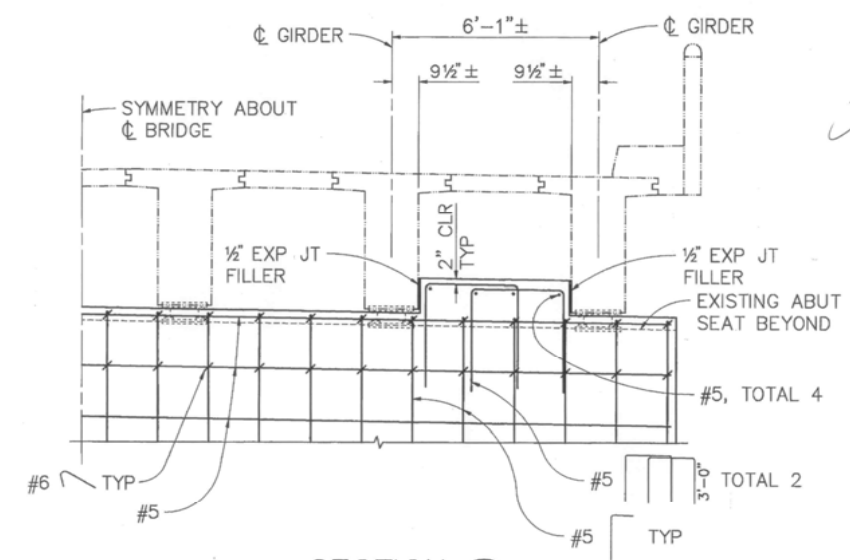
DIST	COUNTY	ROUTE	POST MILES TOTAL PROJECT	SHEET NO.	TOTAL SHEETS
03	Yub	LOCAL			

REGISTERED CIVIL ENGINEER
 JOHN M. VINCENT
 No. C45355
 Exp. 9-30-94
 CIVIL ENGINEER
 STATE OF CALIFORNIA

BIGGS CARDOSA ASSOCIATES INC.
 1871 THE ALAMEDA, SUITE 200
 SAN JOSE, CALIFORNIA 95126



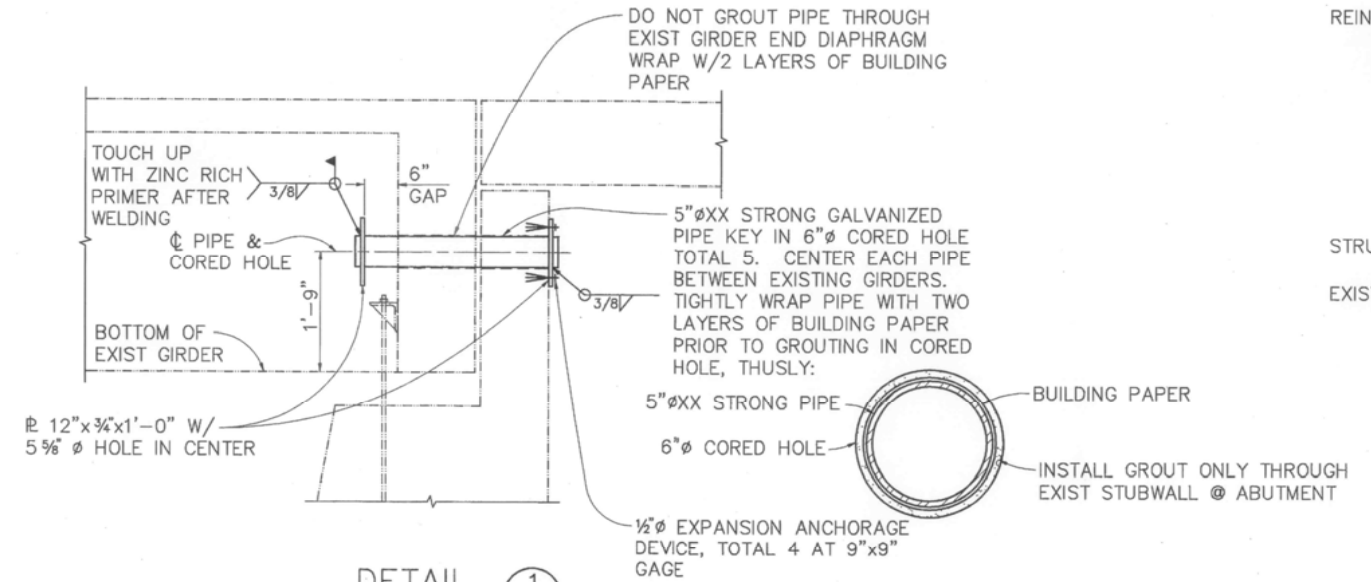
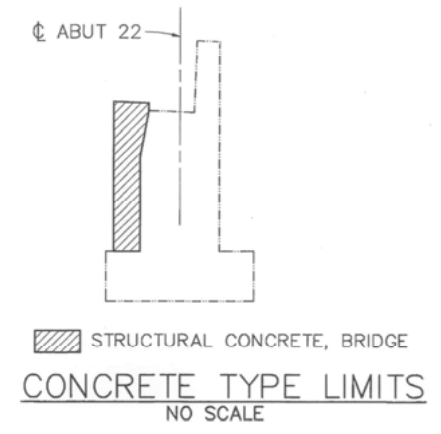
ELEVATION
3/8" = 1'-0"



SECTION A
3/8" = 1'-0" 3

**GENERAL NOTES
LOAD FACTOR DESIGN**

- DESIGN: BRIDGE DESIGN SPECIFICATIONS (1983 AASHTO WITH INTERIMS AND REVISIONS BY CALTRANS)
- SEISMIC LOADING: PEAK ROCK ACCELERATION = 0.20g
DEPTH OF ALLUVIUM = >150'
- REINFORCED CONCRETE:
- | | |
|------------------|-----------------|
| EXISTING | fy = 40,000 psi |
| | f'c = 5,000 psi |
| | n = 7 |
| NEW CONSTRUCTION | fy = 60,000 psi |
| | f'c = 3,250 psi |
| | n = 9 |
- STRUCTURAL STEEL: Fy = 36,000 psi
- EXISTING PILE DATA: 85 TON PILES (SERVICE LOAD)



DETAIL 1
3/4" = 1'-0" 3

AS BUILT
CORRECTIONS BY *Hemul Patel*
CONTRACT NO. *B01-93/03-450914*
DATE *8-26-94*
NO CHANGES

NOTE:
THE CONTRACTOR SHALL VERIFY ALL CONTROLLING FIELD DIMENSIONS BEFORE ORDERING OR FABRICATING ANY MATERIAL

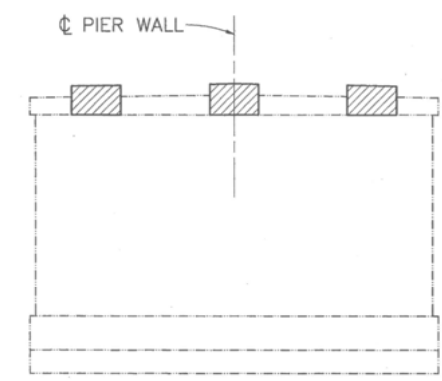
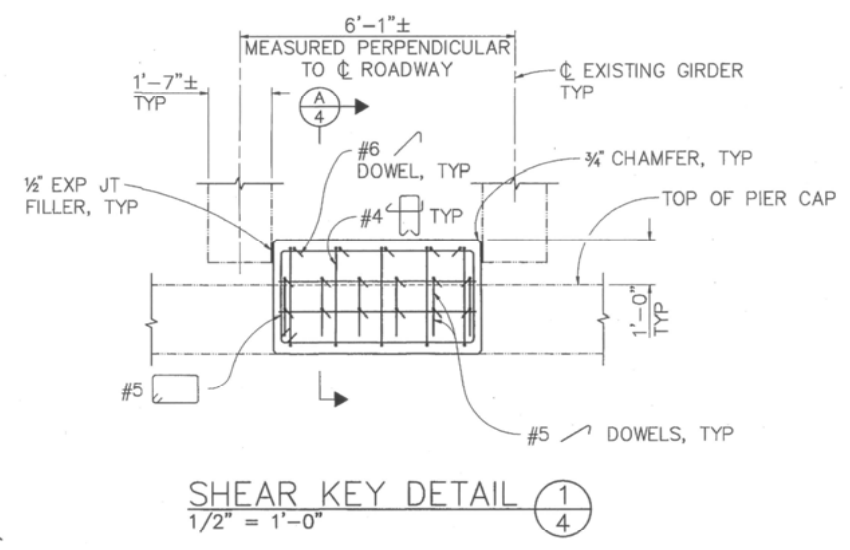
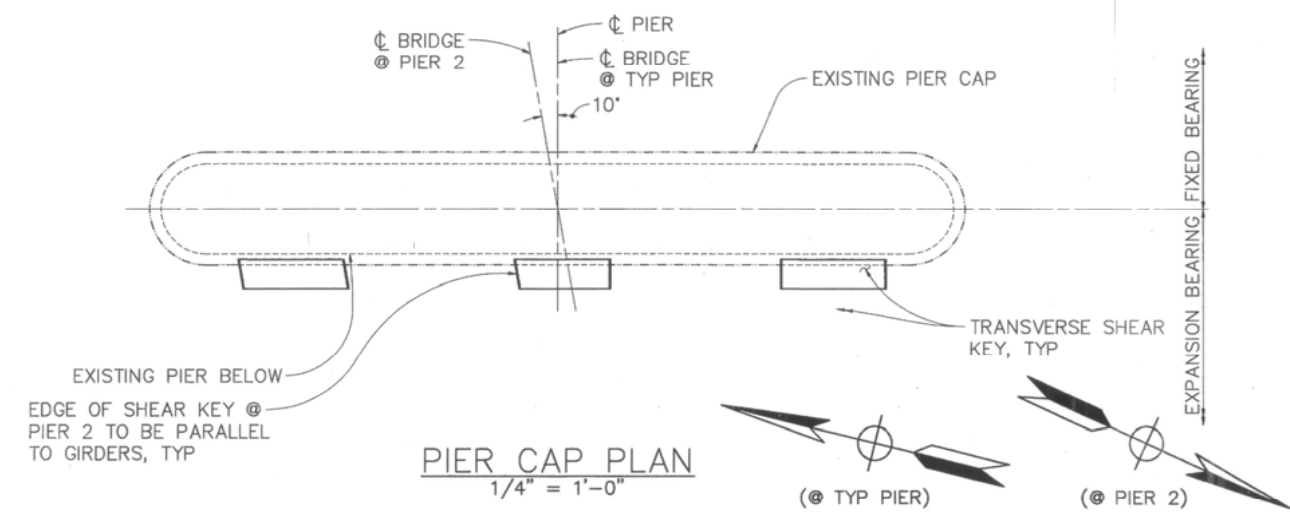
DESIGN OVERSIGHT <i>Michael J. Culbert</i> 1-11-93 SIGN OFF DATE	DESIGN BY M. A. THOMAS CHECKED J. K. NORRENA	PREPARED FOR THE STATE OF CALIFORNIA DEPARTMENT OF TRANSPORTATION	PROJECT ENGINEER JOHN M. VINCENT	BRIDGE NO. 18-CO12	SEISMIC RETROFIT PROJECT C22 FEATHER RIVER @ 5th STREET BRIDGE ABUTMENT 22 RETROFIT
	DETAILS BY M. A. THOMAS CHECKED S. A. METZLER		QUANTITIES BY A. P. NOTARO CHECKED T. C. RODDEN	LOCAL	

ORIGINAL SCALE IN INCHES FOR REDUCED PLANS: 0 1 2 3
 CU 59M497-2
 EA 03-EQC022
 DISREGARD PRINTS BEARING EARLIER REVISION DATES

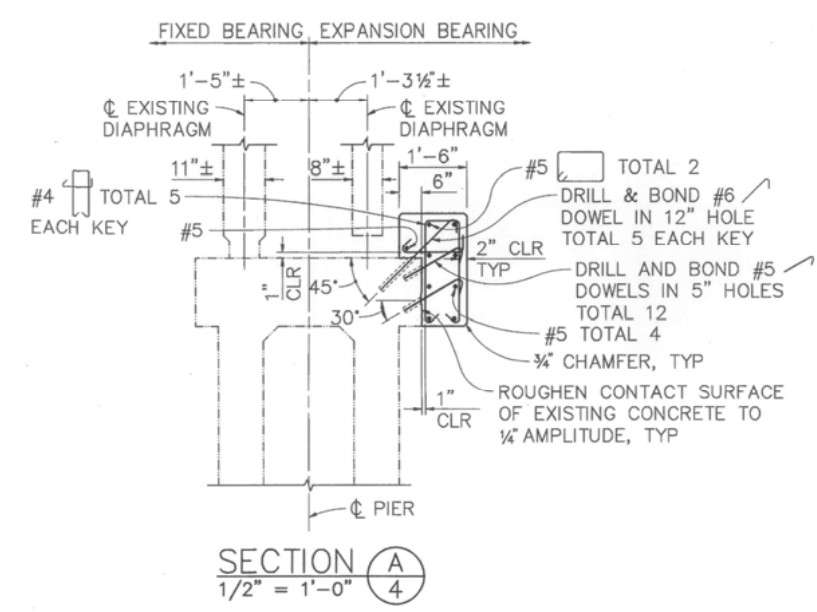
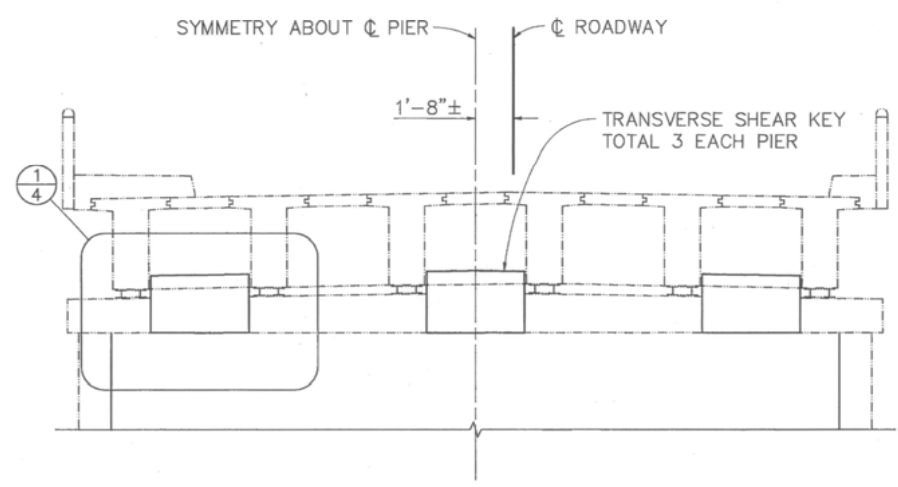
DIST	COUNTY	ROUTE	POST MILES TOTAL PROJECT	SHEET NO.	TOTAL SHEETS
03	Yub	LOCAL			

John M. Vincent 12/7/92
 REGISTERED CIVIL ENGINEER
 No. C45355
 Exp. 9-30-94
 REGISTERED PROFESSIONAL ENGINEER
 JOHN M. VINCENT
 CIVIL
 STATE OF CALIFORNIA

PLANS APPROVAL DATE _____
 BIGGS CARDOSA ASSOCIATES INC.
 1871 THE ALAMEDA, SUITE 200
 SAN JOSE, CALIFORNIA 95126



CONCRETE TYPE LIMITS
 NO SCALE



AS BUILT
 CORRECTIONS BY *Hemul Patel*
 CONTRACT NO. B01-93/03-450914
 DATE 8-26-94
 NO CHANGES

NOTE:
 THE CONTRACTOR SHALL VERIFY ALL CONTROLLING FIELD DIMENSIONS BEFORE ORDERING OR FABRICATING ANY MATERIAL

Michael J. Callan
 DESIGN OVERSIGHT
 1-11-93
 SIGN OFF DATE

DESIGN BY	T. L. SWAYZE	CHECKED	J. K. NORRENA
DETAILS BY	T. L. SWAYZE	CHECKED	S. A. METZLER
QUANTITIES BY	A. P. NOTARO	CHECKED	T. C. RODDEN

PREPARED FOR THE
STATE OF CALIFORNIA
 DEPARTMENT OF TRANSPORTATION

JOHN M. VINCENT
 PROJECT ENGINEER

BRIDGE NO.	18-C012
POST MILE	
LOCAL	

SEISMIC RETROFIT PROJECT C22
 FEATHER RIVER @ 5th STREET BRIDGE
 PIER RETROFIT TYPE I

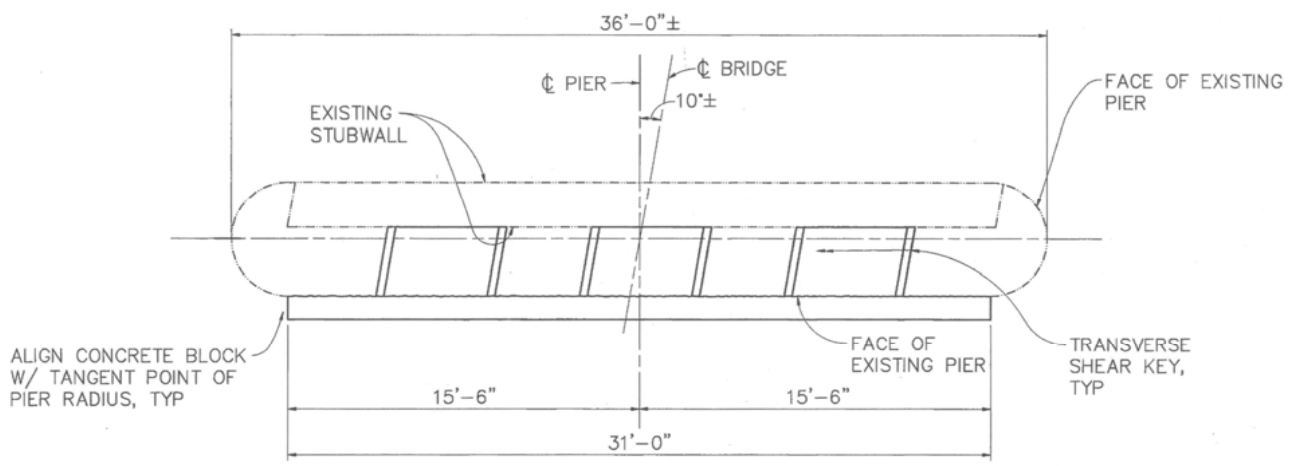
ORIGINAL SCALE IN INCHES FOR REDUCED PLANS
 0 1 2 3
 CU 59M497-2
 EA 03-EQC022

DISREGARD PRINTS BEARING EARLIER REVISION DATES	REVISION DATES (PRELIMINARY STAGE ONLY)	SHEET OF
	2/11/92 5/20/92 12/4/92	4 8

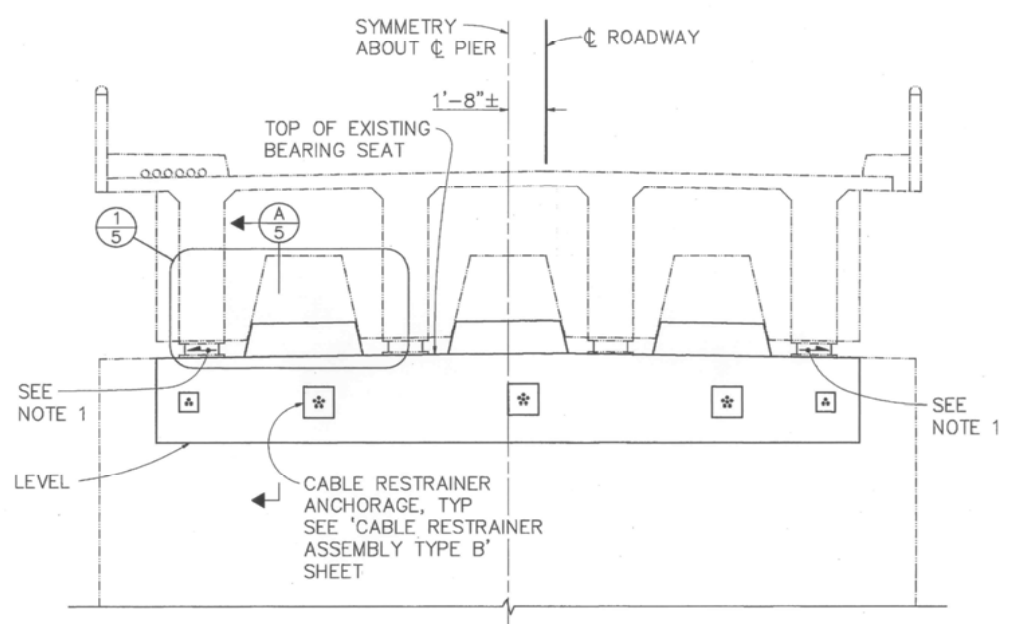
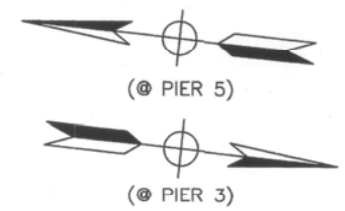
DIST	COUNTY	ROUTE	POST MILES TOTAL PROJECT	SHEET NO.	TOTAL SHEETS
03	Yub	LOCAL			

REGISTERED CIVIL ENGINEER
 No. C45355
 Exp. 9-30-94
 CIVIL ENGINEER
 STATE OF CALIFORNIA

BIGGS CARDOSA ASSOCIATES INC.
 1871 THE ALAMEDA, SUITE 200
 SAN JOSE, CALIFORNIA 95126



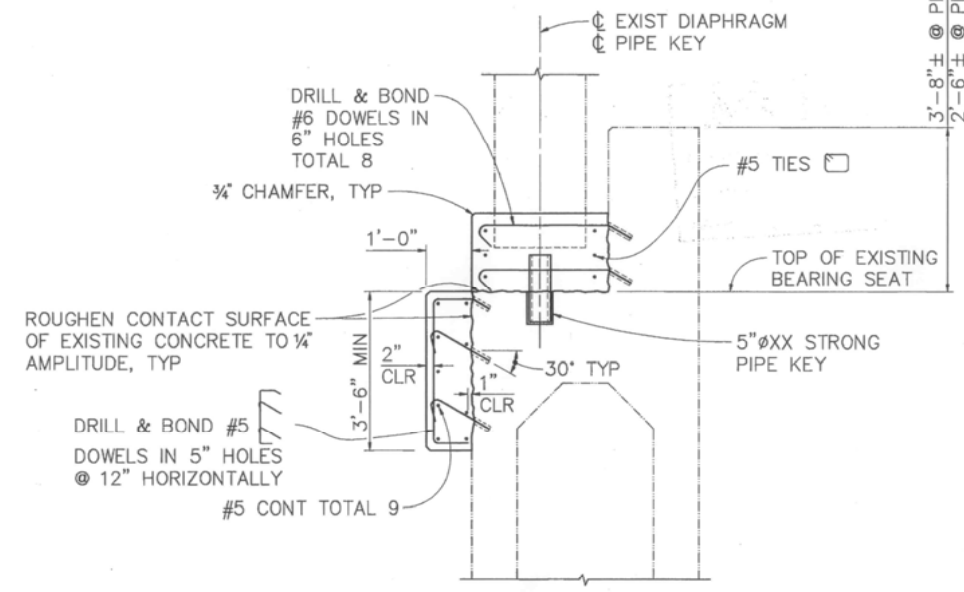
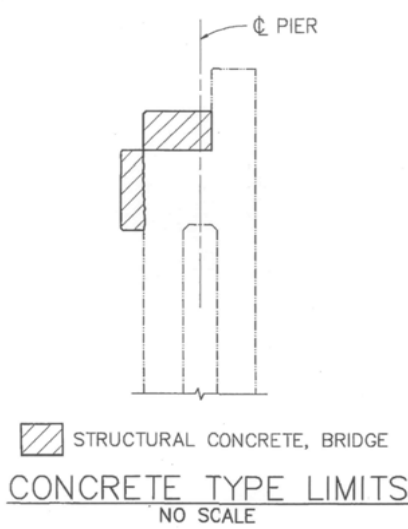
PIER CAP PLAN
1/4" = 1'-0"



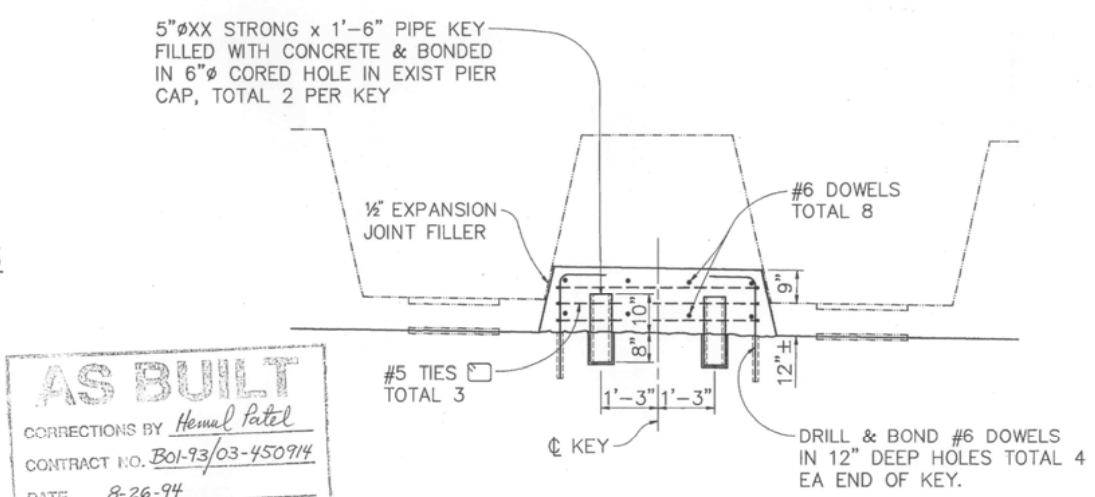
PIERS 3 & 5
(PIER 5 SHOWN, PIER 3 SIMILAR)
FRONT ELEVATION
1/4" = 1'-0"

NOTE:
THE CONTRACTOR SHALL VERIFY ALL CONTROLLING FIELD DIMENSIONS BEFORE ORDERING OR FABRICATING ANY MATERIAL.

NOTE:
1. SLOPE TO MATCH EXISTING SLOPE = -1.5% ±



SECTION A
1/2" = 1'-0"



DETAIL 1
1/2" = 1'-0"

AS BUILT
 CORRECTIONS BY Hemal Patel
 CONTRACT NO. B01-93/03-450714
 DATE 8-26-94
 NO CHANGES

Michael J. Cullen
 DESIGN OVERSIGHT
 1-11-93
 SIGN OFF DATE

DESIGN	BY T. L. SWAYZE	CHECKED J. K. NORRENA
DETAILS	BY T. L. SWAYZE	CHECKED S. A. METZLER
QUANTITIES	BY A. P. NOTARO	CHECKED T. C. RODDEN

PREPARED FOR THE
STATE OF CALIFORNIA
 DEPARTMENT OF TRANSPORTATION

JOHN M. VINCENT
 PROJECT ENGINEER

BRIDGE NO.	18-C012
POST MILE	
LOCAL	

SEISMIC RETROFIT PROJECT C22
 FEATHER RIVER @ 5th STREET BRIDGE
 PIER RETROFIT TYPE II

ORIGINAL SCALE IN INCHES FOR REDUCED PLANS 0 1 2 3

CU 59M497-2
EA 03-EQC022

DISREGARD PRINTS BEARING EARLIER REVISION DATES

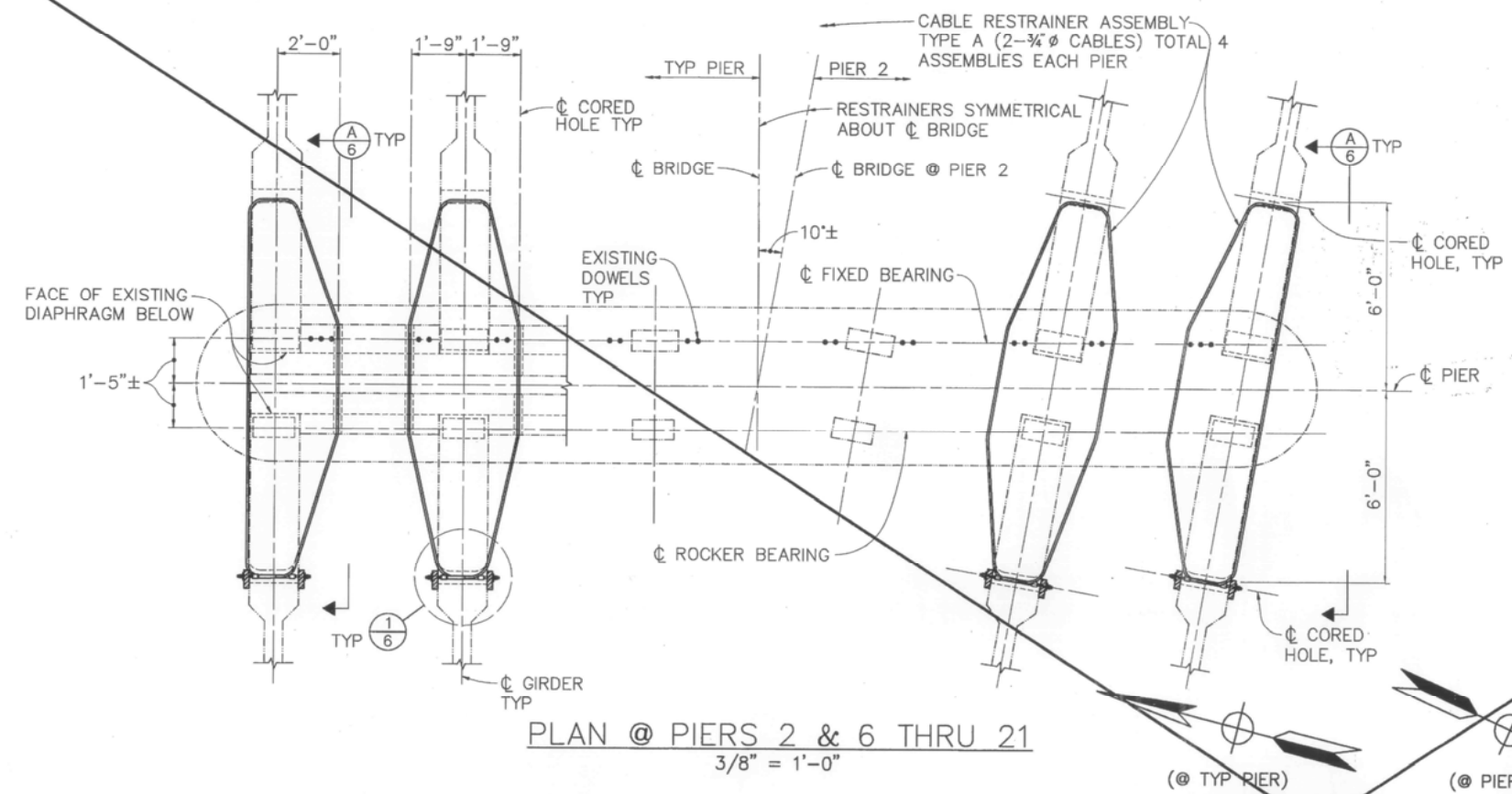
REVISION DATES (PRELIMINARY STAGE ONLY)				SHEET	OF
5/20/92	5/20/92	12/4/92		5	8

DIST	COUNTY	ROUTE	POST MILES TOTAL PROJECT	SHEET NO.	TOTAL SHEETS
03	Yub	LOCAL			

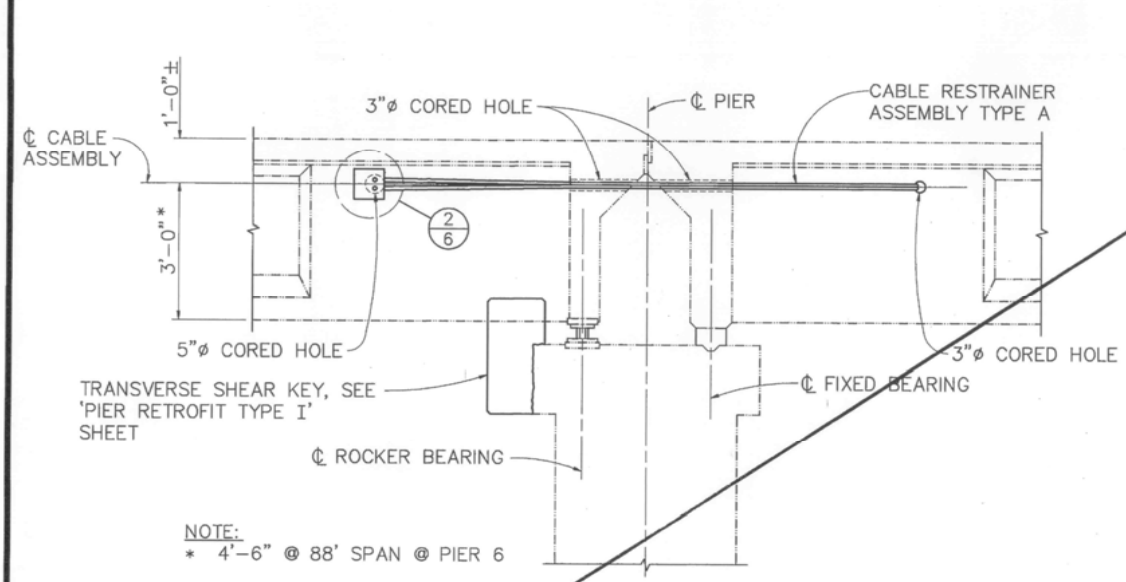
REGISTERED CIVIL ENGINEER
 No. C45355
 Exp. 9-30-94
 CIVIL ENGINEER
 STATE OF CALIFORNIA

BIGGS CARDOSA ASSOCIATES INC.
 1871 THE ALAMEDA, SUITE 200
 SAN JOSE, CALIFORNIA 95126

SUPERSEDED;
 REVISED SHEET 6 ISSUED
 WITH CCO No. 1.

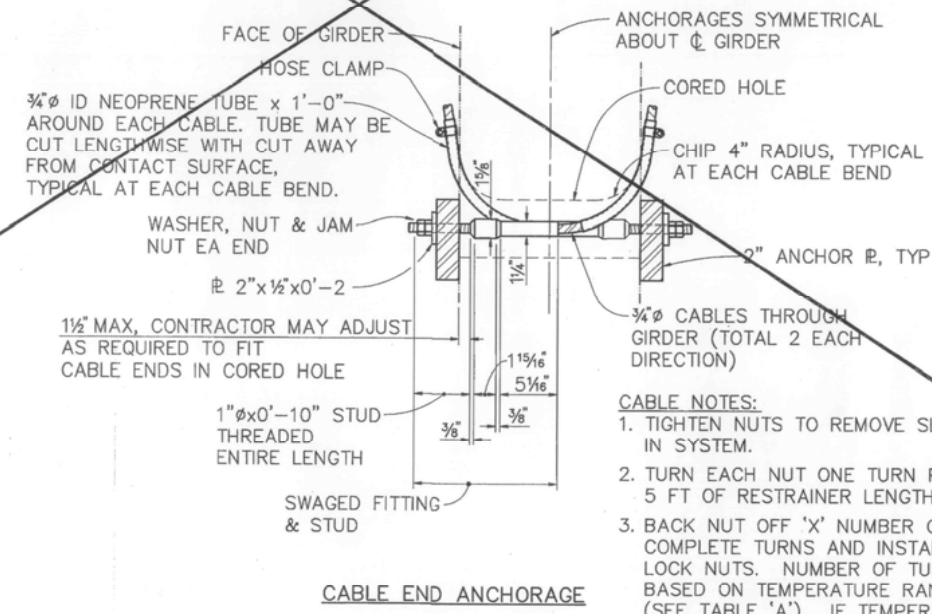


PLAN @ PIERS 2 & 6 THRU 21
 3/8" = 1'-0"



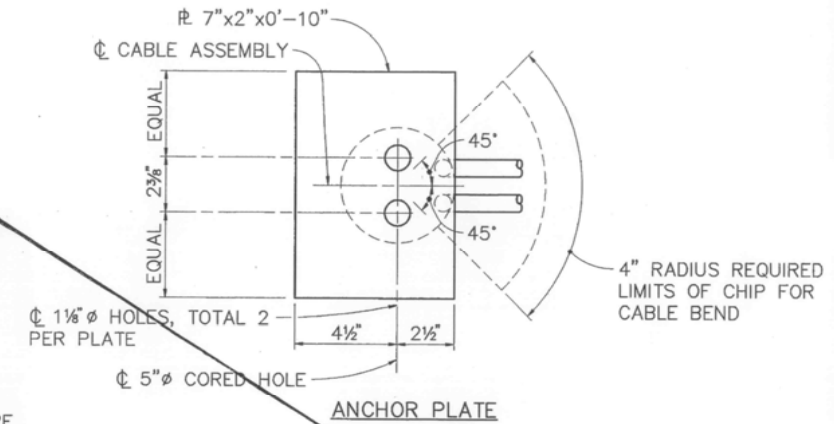
SECTION A
 1/2" = 1'-0"

AMBIENT TEMPERATURE	10'	35'	60'	85'	110'
'X' NO. OF BOLT TURNS	0	1	2	3	4



CABLE END ANCHORAGE

DETAIL 1
 1 1/2" = 1'-0"



DETAIL 2
 3" = 1'-0"

NOTE:
 THE CONTRACTOR SHALL VERIFY ALL CONTROLLING FIELD DIMENSIONS BEFORE ORDERING OR FABRICATING ANY MATERIAL

Michael J. Hubler
 DESIGN OVERSIGHT
 1-11-93
 SIGN OFF DATE

DESIGN BY M. A. THOMAS CHECKED J. K. NORRENA
 DETAILS BY M. A. THOMAS CHECKED S. A. METZLER
 QUANTITIES BY A. P. NOTARO CHECKED T. C. RODDEN

PREPARED FOR THE
STATE OF CALIFORNIA
 DEPARTMENT OF TRANSPORTATION

JOHN M. VINCENT
 PROJECT ENGINEER

BRIDGE NO.
 18-C012
 POST MILE
 LOCAL

SEISMIC RETROFIT PROJECT C22
FEATHER RIVER @ 5th STREET BRIDGE
CABLE RESTRAINER ASSEMBLY TYPE A

ORIGINAL SCALE IN INCHES FOR REDUCED PLANS
 0 1 2 3

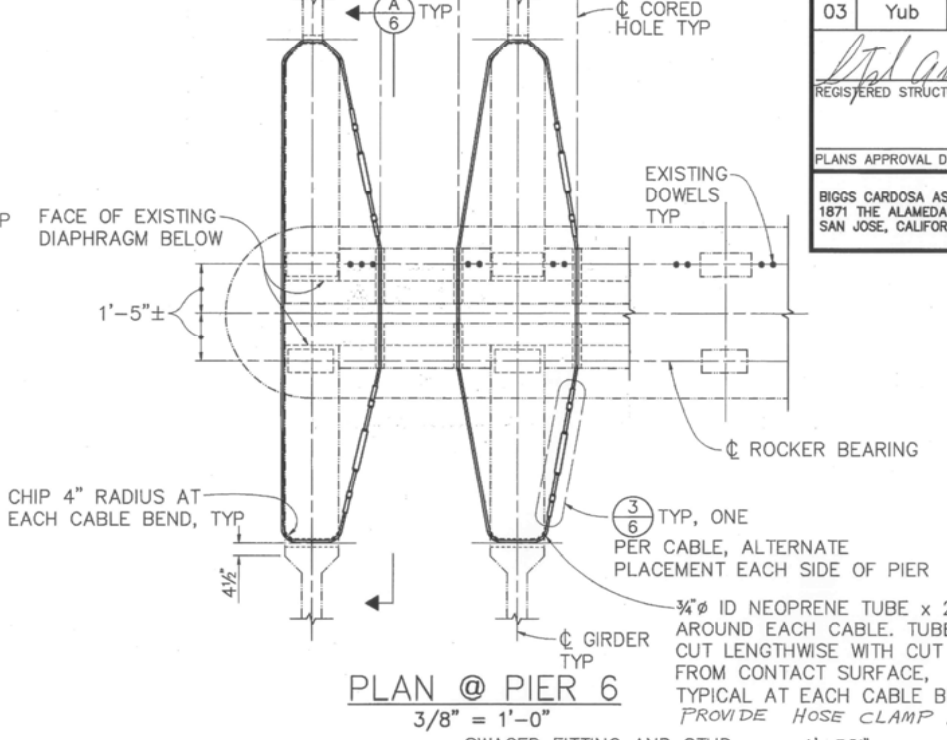
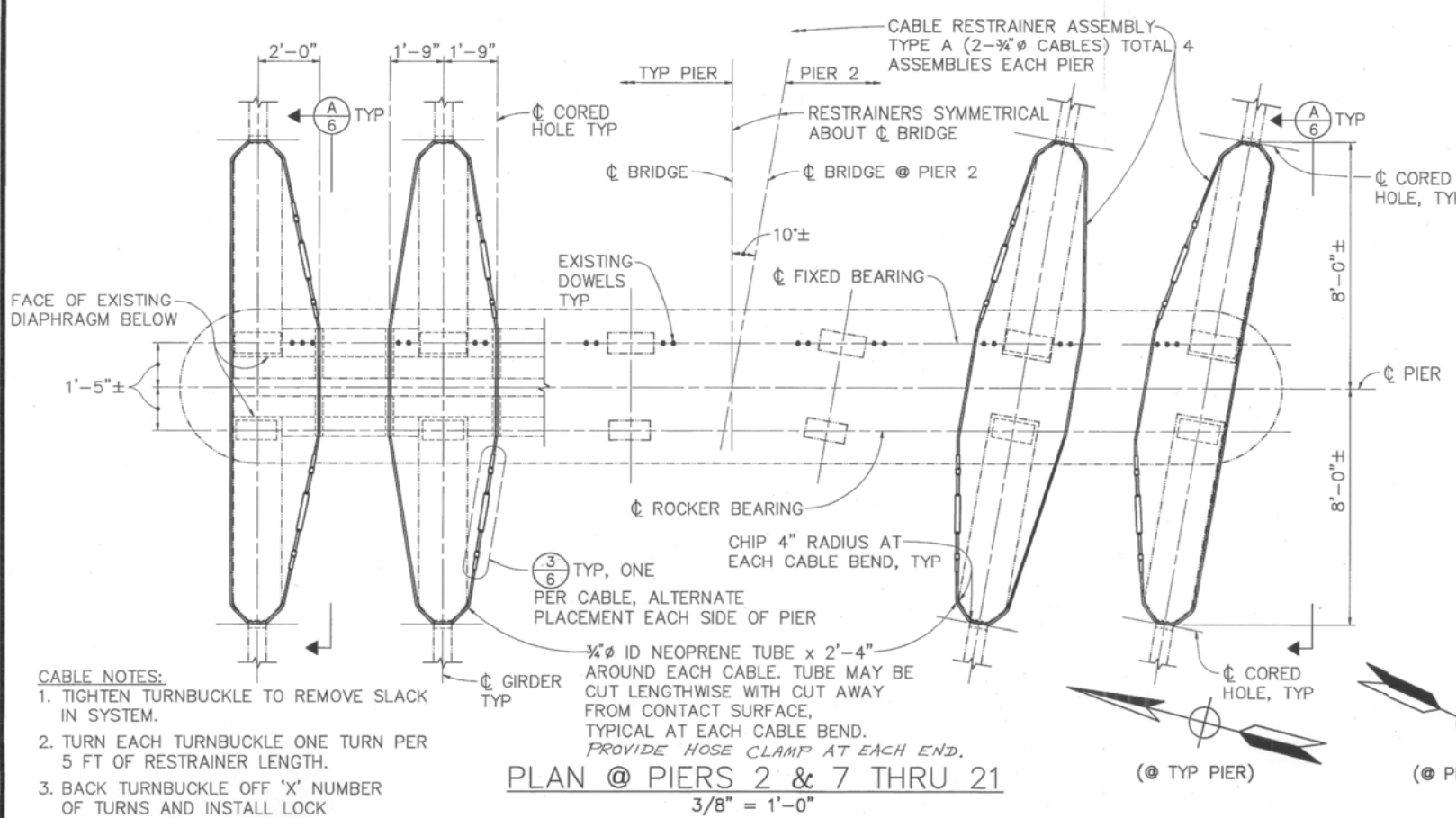
CU 59M497-2
 EA 03-EQC022

DISREGARD PRINTS BEARING EARLIER REVISION DATES

REVISION DATES (PRELIMINARY STAGE ONLY)
 2/11/92 5/20/92 12/14/92
 SHEET 6 OF 8

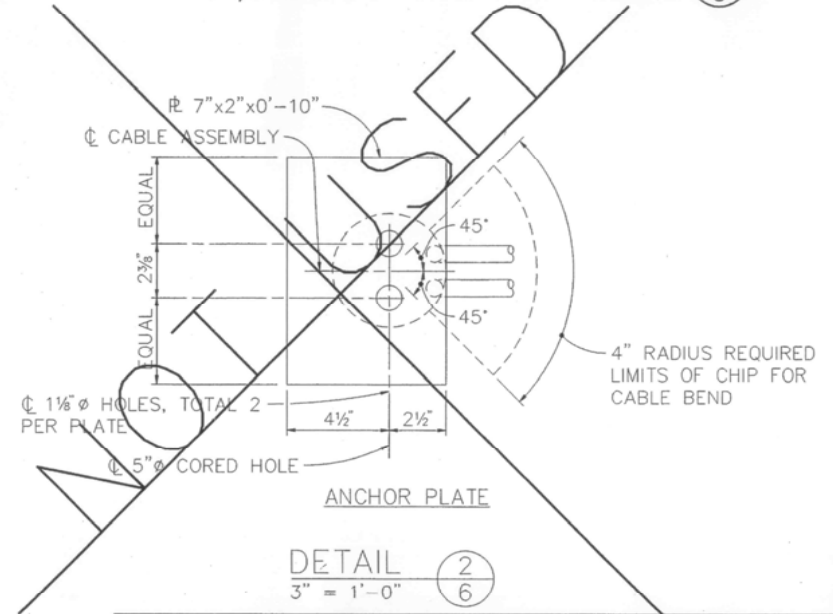
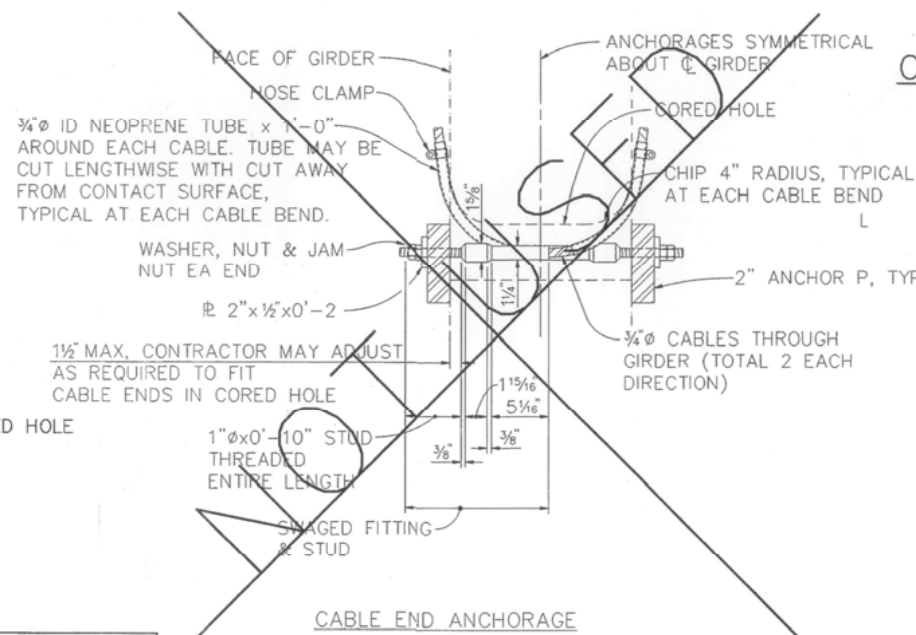
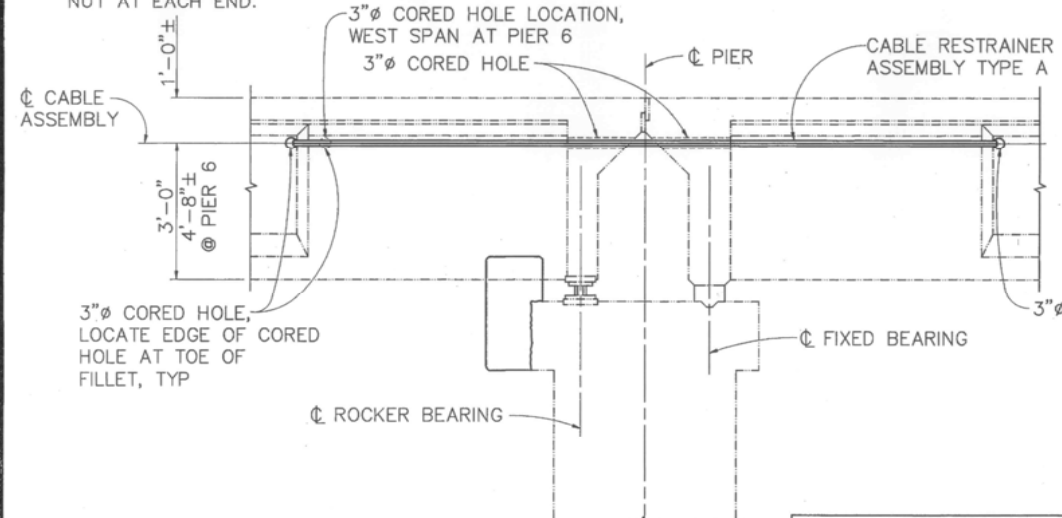
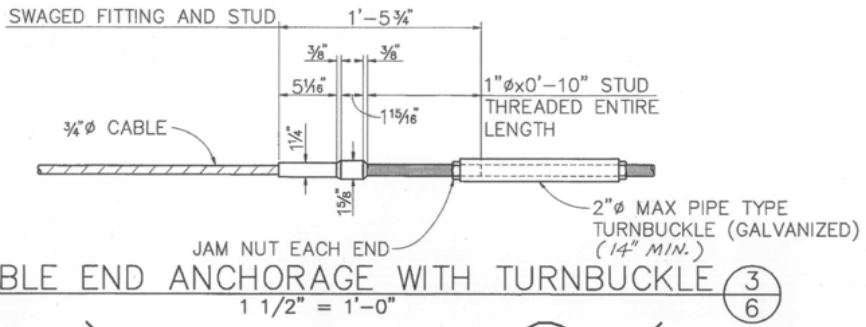
DIST	COUNTY	ROUTE	POST MILES	SHEET	TOTAL
03	Yub	LOCAL	TOTAL PROJECT	NO.	SHEETS

Steph A. Biggs 4/28/94
 REGISTERED STRUCTURAL ENGINEER
 No. S2272
 Exp. 3-31-98
 PLANS APPROVAL DATE _____
 BIGGS CARDOSA ASSOCIATES INC.
 1871 THE ALAMEDA, SUITE 200
 SAN JOSE, CALIFORNIA 95126



AS BUILT
 CORRECTIONS BY *Hemal Patel*
 CONTRACT NO. B01-93/03-450914
 DATE 8-26-94

- CABLE NOTES:**
- TIGHTEN TURNBUCKLE TO REMOVE SLACK IN SYSTEM.
 - TURN EACH TURNBUCKLE ONE TURN PER 5 FT OF RESTRAINER LENGTH.
 - BACK TURNBUCKLE OFF 'X' NUMBER OF TURNS AND INSTALL LOCK NUTS. NUMBER OF TURNS BASED ON TEMPERATURE RANGE (SEE TABLE 'A'). IF TEMPERATURE RANGE IS DIFFERENT, ADJUSTMENTS WILL BE DETERMINED BY THE ENGINEER.
 - SET WASHER, ANCHOR NUT AND LOCK NUT AT EACH END.



AMBIENT TEMPERATURE	10'	35'	60'	85'	110'
'X' NO. OF BOLT TURNS	0	1	2	3	4

NOTE: THE CONTRACTOR SHALL VERIFY ALL CONTROLLING FIELD DIMENSIONS BEFORE ORDERING OR FABRICATING ANY MATERIAL

MJ Cullen
 DESIGN OVERSIGHT
 4-29-94
 SIGN OFF DATE

DESIGN	BY M. A. THOMAS	CHECKED J. K. NORRENA
DETAILS	BY M. A. THOMAS	CHECKED S. A. METZLER
QUANTITIES	BY A. P. NOTARO	CHECKED T. C. RODDEN

PREPARED FOR THE
STATE OF CALIFORNIA
 DEPARTMENT OF TRANSPORTATION

STEPHEN A. BIGGS
 PROJECT ENGINEER

BRIDGE NO.
 18-C012
 POST MILE
 LOCAL

SEISMIC RETROFIT PROJECT C22
 FEATHER RIVER @ 5th STREET BRIDGE
 CABLE RESTRAINER ASSEMBLY TYPE A

ORIGINAL SCALE IN INCHES FOR REDUCED PLANS
 0 1 2 3

CU 59M497-2
 EA 03-EQC022

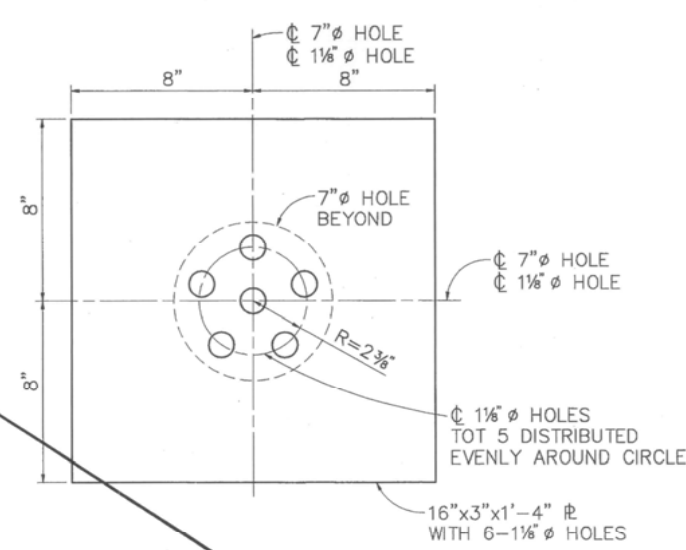
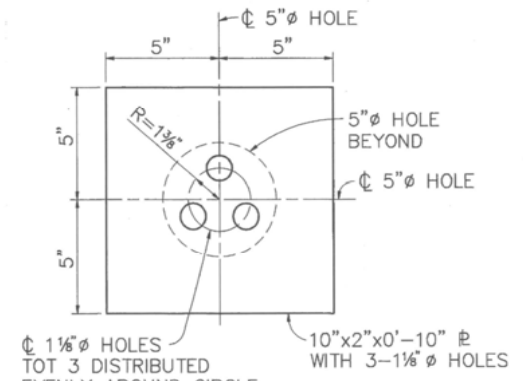
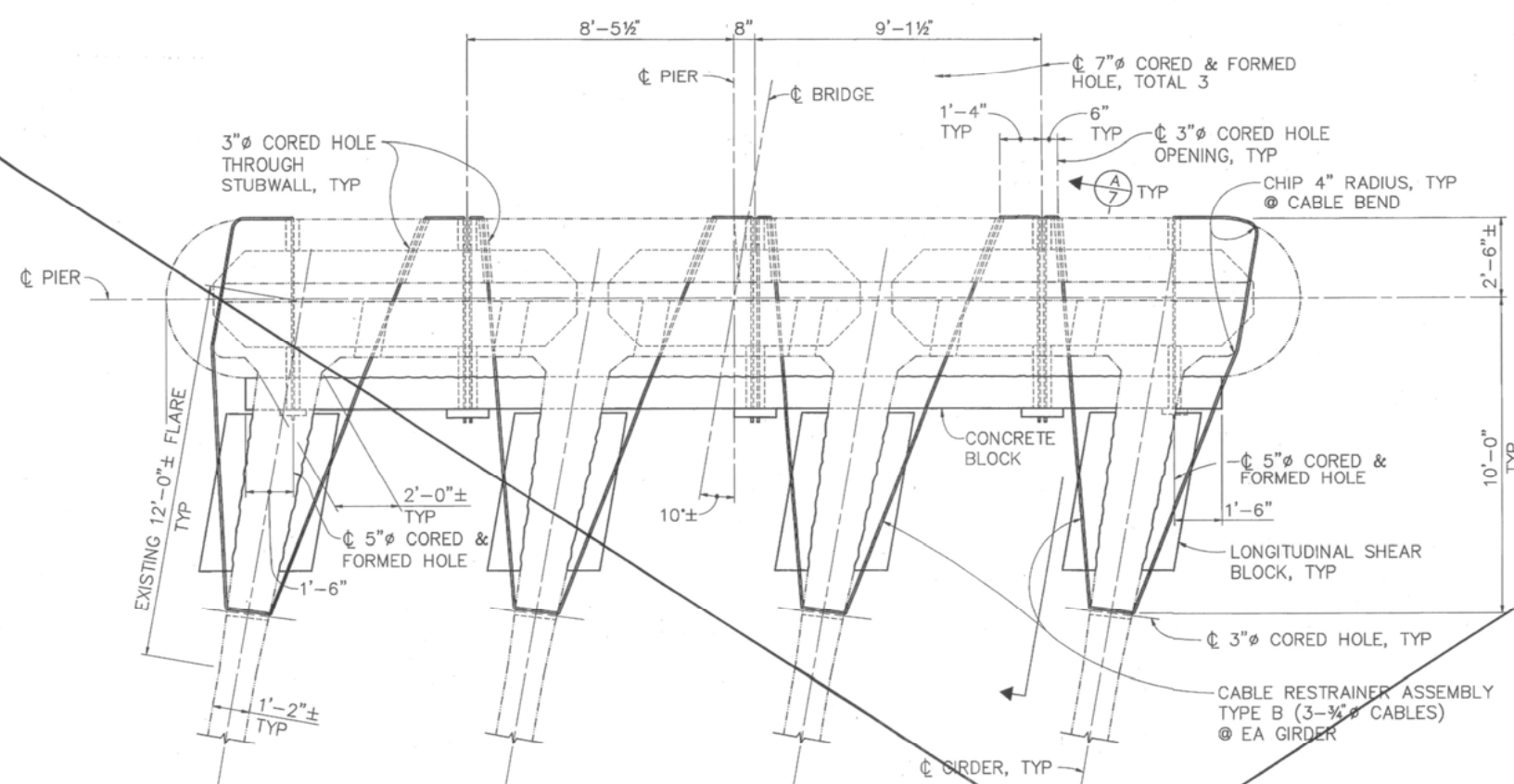
DISREGARD PRINTS BEARING EARLIER REVISION DATES
 REVISION DATES (PRELIMINARY STAGE ONLY)
 SHEET 6 OF 8

DIST	COUNTY	ROUTE	POST MILES TOTAL PROJECT	SHEET NO.	TOTAL SHEETS
03	Yub	LOCAL			

REGISTERED CIVIL ENGINEER
 JOHN M. VINCENT
 No. C45355
 Exp. 9-30-94
 CIVIL ENGINEER
 STATE OF CALIFORNIA

BIGGS CARDOSA ASSOCIATES INC.
 1871 THE ALAMEDA, SUITE 200
 SAN JOSE, CALIFORNIA 95128

SUPERSEDED;
 REVISED SHEET 7 ISSUED
 WITH CCO No. 1.

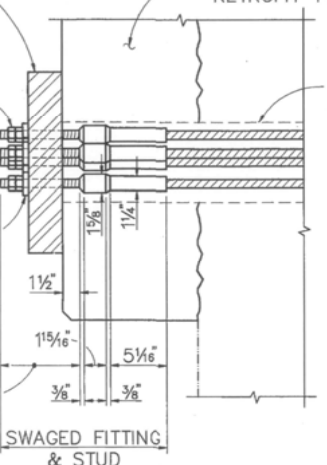


- CABLE NOTES:**
- TIGHTEN NUTS TO REMOVE SLACK IN SYSTEM.
 - TURN EACH NUT ONE TURN PER 5 FT OF RESTRAINER LENGTH.
 - BACK NUT OFF 'X' NUMBER OF COMPLETE TURNS AND INSTALL LOCK NUTS. NUMBER OF TURNS BASED ON TEMPERATURE RANGE (SEE TABLE 'A'). IF TEMPERATURE RANGE IS DIFFERENT, ADJUSTMENTS WILL BE DETERMINED BY THE ENGINEER.
 - SET WASHER, ANCHOR NUT AND LOCK NUT AT EACH END.

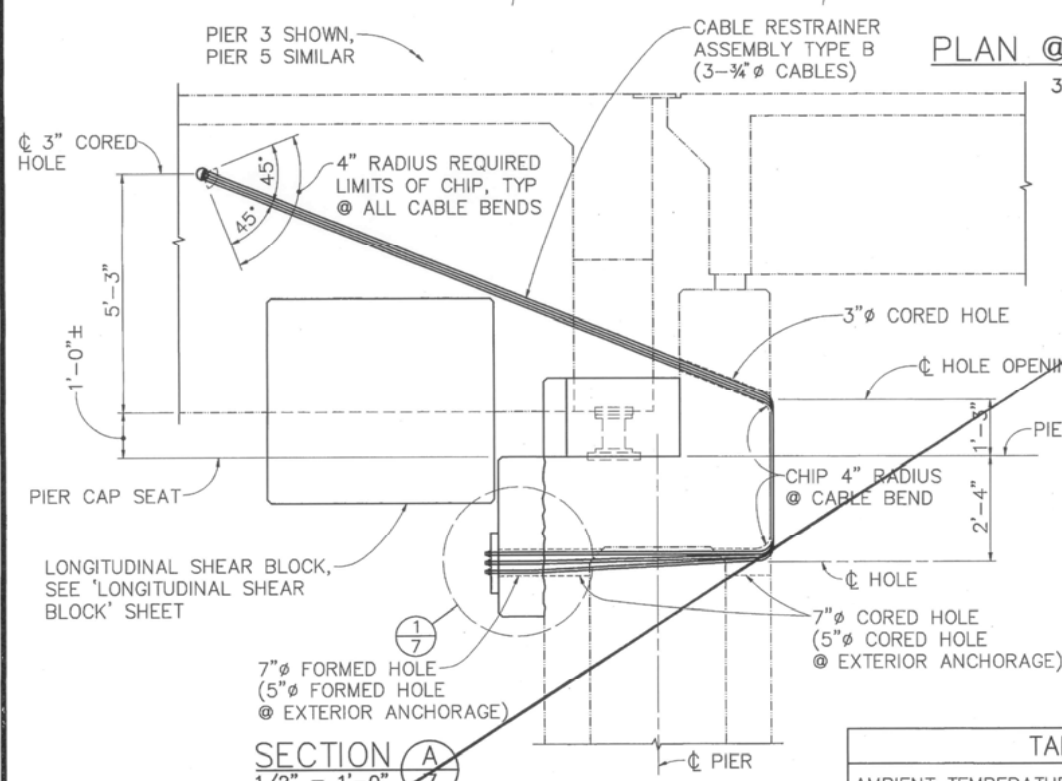
PLAN @ PIERS 3 & 5
 3/8" = 1'-0"

TABLE 'A'

AMBIENT TEMPERATURE	10'	35'	60'	85'	110'
'X' NO. OF BOLT TURNS	0	2	4	6	8



DETAIL 1
 1 1/2" = 1'-0"



SECTION A
 1/2" = 1'-0"

NOTE:
 THE CONTRACTOR SHALL VERIFY ALL CONTROLLING FIELD DIMENSIONS BEFORE ORDERING OR FABRICATING ANY MATERIAL

DESIGN OVERSIGHT
 1-11-93
 SIGN OFF DATE

DESIGN	BY M. A. THOMAS	CHECKED J. K. NORRENA
DETAILS	BY M. A. THOMAS	CHECKED S. A. METZLER
QUANTITIES	BY A. P. NOTARO	CHECKED T. C. RODDEN

PREPARED FOR THE
 STATE OF CALIFORNIA
 DEPARTMENT OF TRANSPORTATION

JOHN M. VINCENT
 PROJECT ENGINEER

BRIDGE NO.	18-C012
POST MILE	LOCAL

SEISMIC RETROFIT PROJECT C22
 FEATHER RIVER @ 5th STREET BRIDGE
 CABLE RESTRAINER ASSEMBLY TYPE B

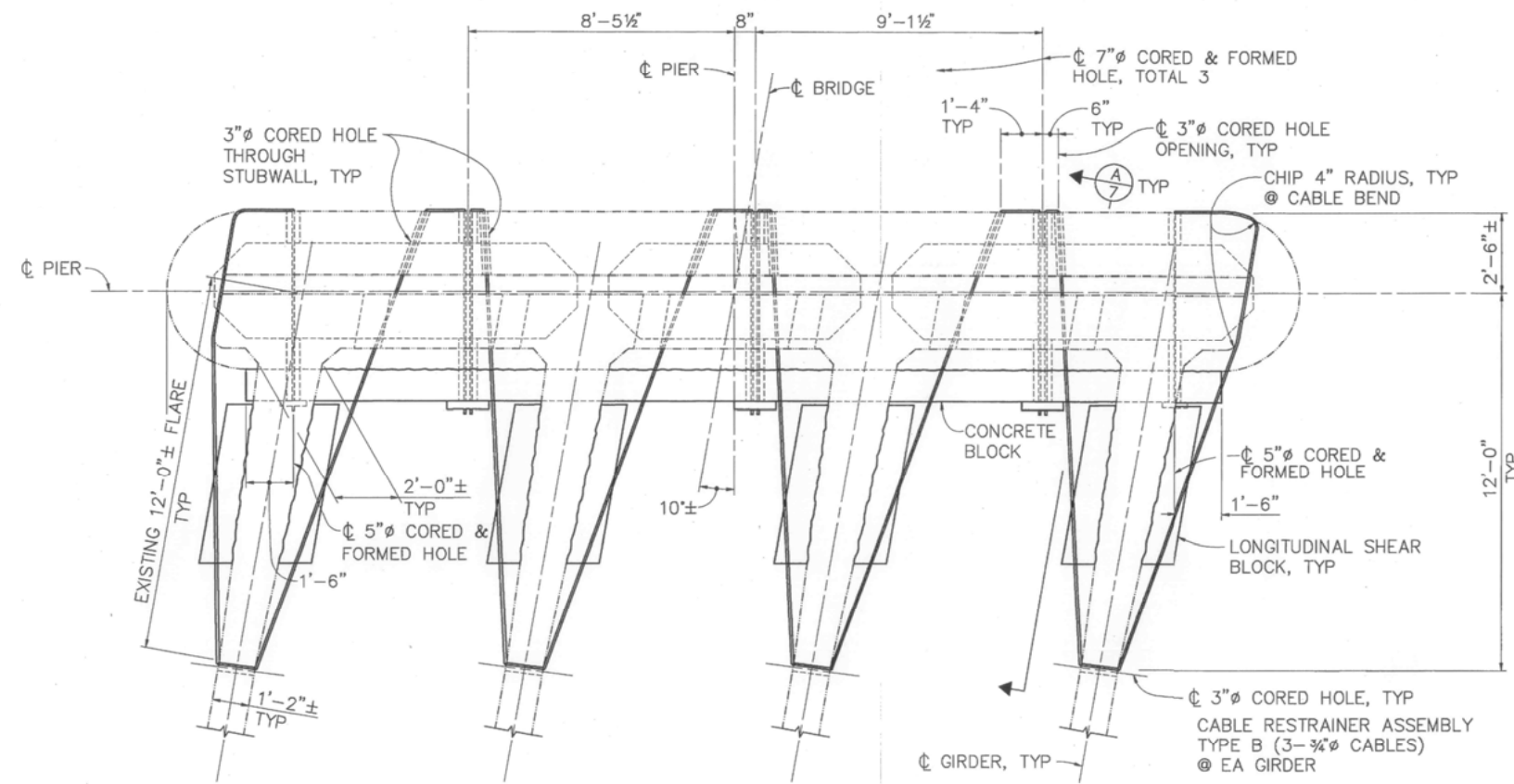
ORIGINAL SCALE IN INCHES FOR REDUCED PLANS

CU 59M497-2
 EA 03-EQC022

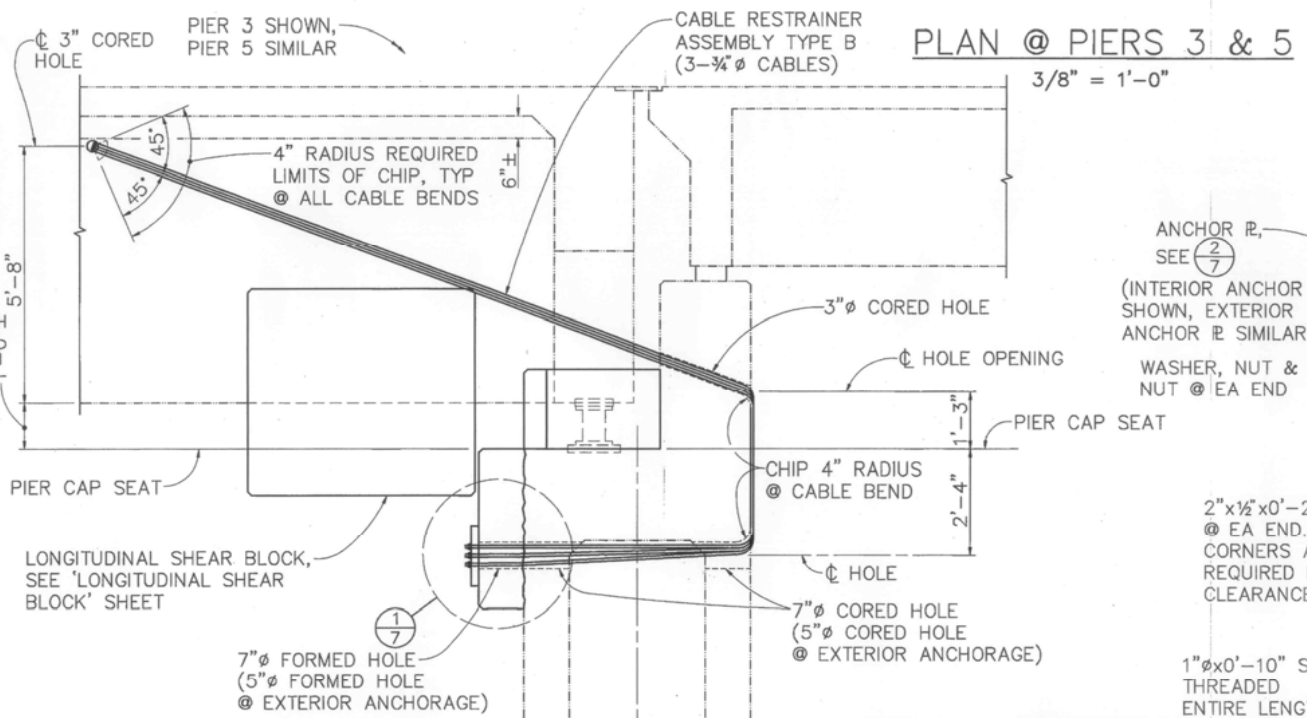
DISREGARD PRINTS BEARING EARLIER REVISION DATES

REVISION DATES (PRELIMINARY STAGE ONLY)	SHEET 7 OF 8
---	--------------

DIST	COUNTY	ROUTE	POST MILES TOTAL PROJECT	SHEET NO.	TOTAL SHEETS
03	Yub	LOCAL			
<i>Stephen A. Biggs</i> 4/20/94 REGISTERED STRUCTURAL ENGINEER					
PLANS APPROVAL DATE _____ No. S2272 Exp. 3-31-98 REGISTERED PROFESSIONAL ENGINEER STRUCTURAL STATE OF CALIFORNIA					
BIGGS CARDOSA ASSOCIATES INC. 1871 THE ALAMEDA, SUITE 200 SAN JOSE, CALIFORNIA 95126					



AS BUILT
 CORRECTIONS BY *Hemul Patel*
 CONTRACT NO. B01-93/03-450914
 DATE 8-26-94



SECTION A-A
 1/2" = 1'-0"
 NOTE: THE CONTRACTOR SHALL VERIFY ALL CONTROLLING FIELD DIMENSIONS BEFORE ORDERING OR FABRICATING ANY MATERIAL

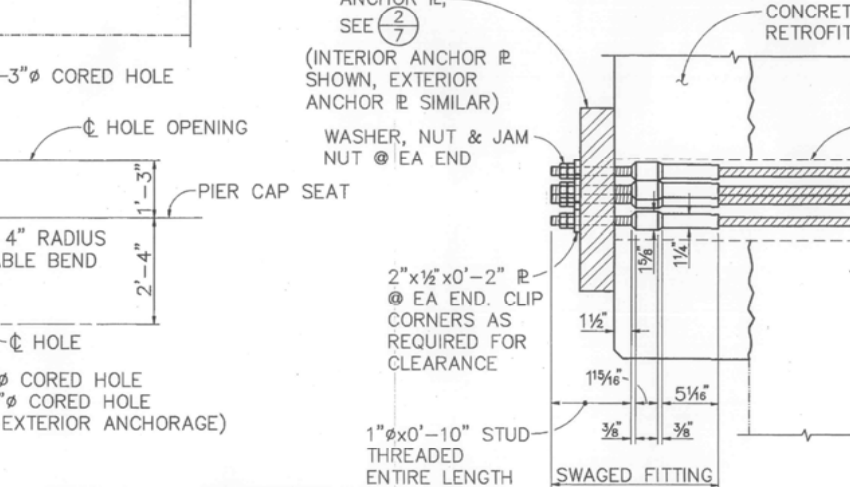
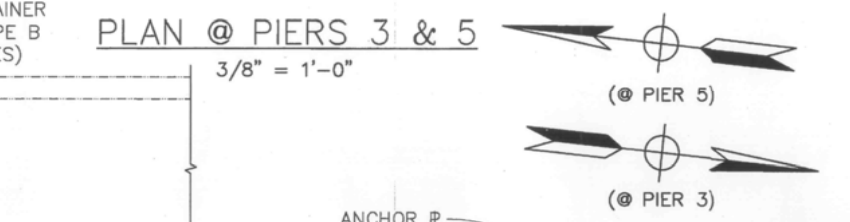
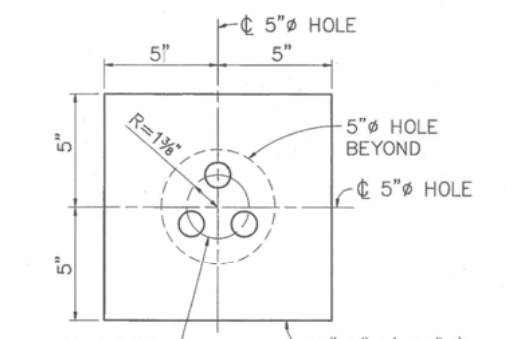


TABLE 'A'

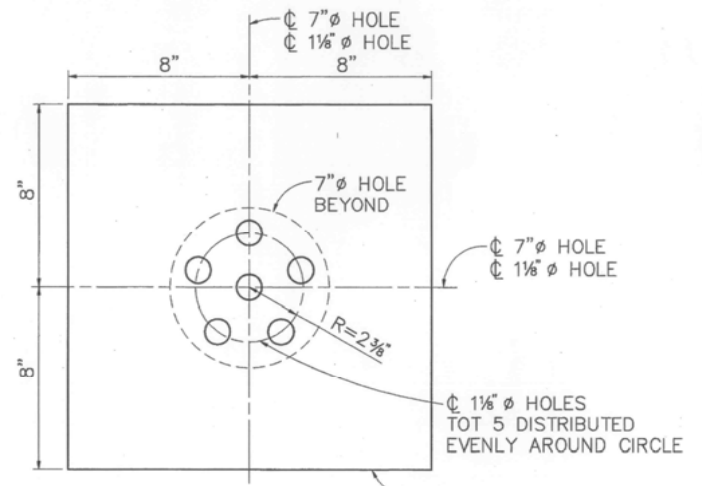
AMBIENT TEMPERATURE	10°	35°	60°	85°	110°
'X' NO. OF BOLT TURNS	0	2	4	6	8

DETAIL 1
 1 1/2" = 1'-0"

- CABLE NOTES:**
- TIGHTEN NUTS TO REMOVE SLACK IN SYSTEM.
 - TURN EACH NUT ONE TURN PER 5 FT. OF RESTRAINER LENGTH.
 - BACK NUT OFF 'X' NUMBER OF COMPLETE TURNS AND INSTALL LOCK NUTS. NUMBER OF TURNS BASED ON TEMPERATURE RANGE (SEE TABLE 'A'). IF TEMPERATURE RANGE IS DIFFERENT, ADJUSTMENTS WILL BE DETERMINED BY THE ENGINEER.
 - SET WASHER, ANCHOR NUT AND LOCK NUT AT EACH END.



EXTERIOR ANCHOR PLATE
 10" x 2" x 0'-10" PLATE WITH 3-1/8" HOLES
 5" HOLES
 R=1 1/2"



INTERIOR ANCHOR PLATE
 16" x 3" x 1'-4" PLATE WITH 6-1/8" HOLES
 7" HOLE BEYOND
 R=2 3/8"

DETAIL 2
 3" = 1'-0"

M. J. Callen
 DESIGN OVERSIGHT
 4-29-94

DESIGN	BY M. A. THOMAS	CHECKED J. K. NORRENA
DETAILS	BY M. A. THOMAS	CHECKED S. A. METZLER
QUANTITIES	BY A. P. NOTARO	CHECKED T. C. RODDEN

PREPARED FOR THE STATE OF CALIFORNIA DEPARTMENT OF TRANSPORTATION

STEPHEN A. BIGGS
 PROJECT ENGINEER

BRIDGE NO. 18-C012
 POST MILE LOCAL

SEISMIC RETROFIT PROJECT C22
FEATHER RIVER @ 5th STREET BRIDGE
CABLE RESTRAINER ASSEMBLY TYPE B

ORIGINAL SCALE IN INCHES FOR REDUCED PLANS 0 1 2 3

CU 59M497-2
 EA 03-EQC022

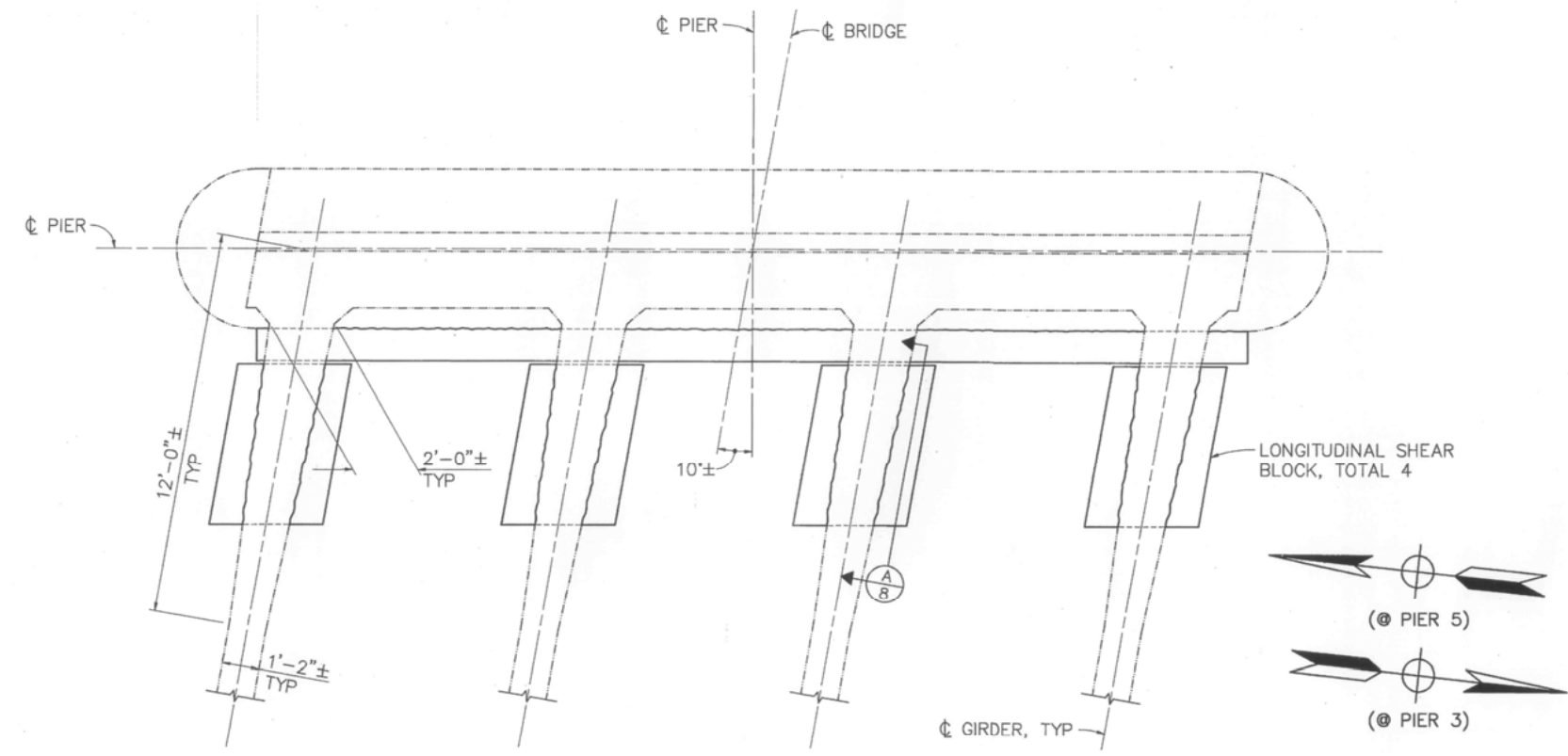
DISREGARD PRINTS BEARING EARLIER REVISION DATES

REVISION DATES (PRELIMINARY STAGE ONLY)	SHEET	OF
5/20/94 5/28/94 6/12/94 6/24/94 7/28/94	7	8

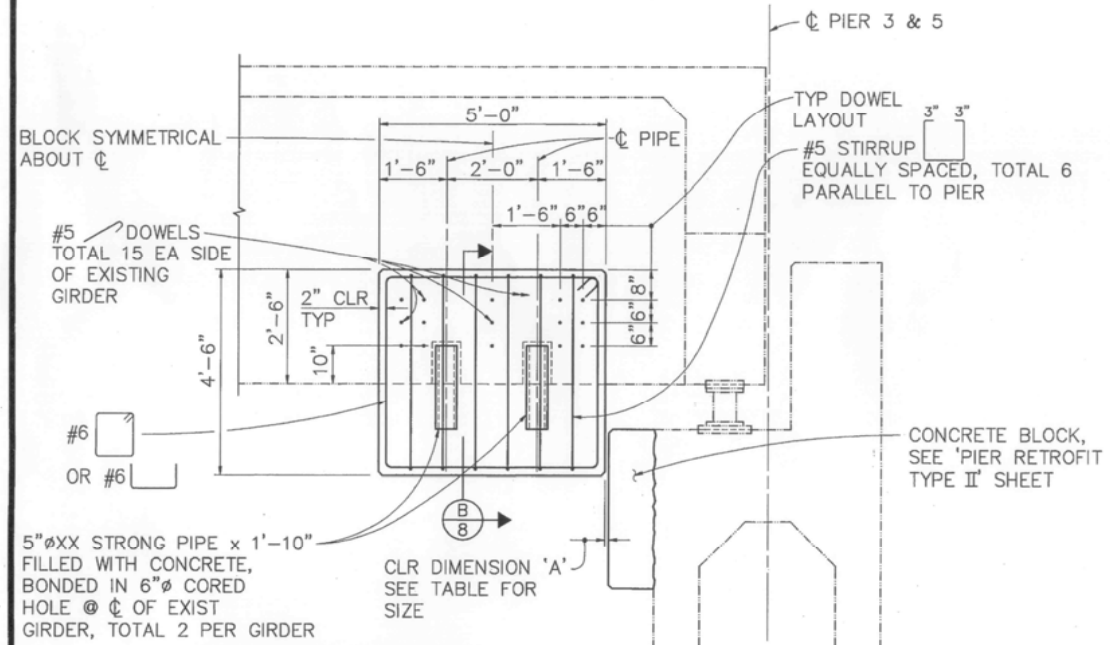
DIST	COUNTY	ROUTE	POST MILES	SHEET	TOTAL
03	Yub	LOCAL	TOTAL PROJECT	NO.	SHEETS

John M. Vincent 12/7/92
 REGISTERED CIVIL ENGINEER
 No. C45355
 Exp. 9-30-94
 CIVIL ENGINEER
 STATE OF CALIFORNIA

PLANS APPROVAL DATE _____
 BIGGS CARDOSA ASSOCIATES INC.
 1871 THE ALAMEDA, SUITE 200
 SAN JOSE, CALIFORNIA 95126



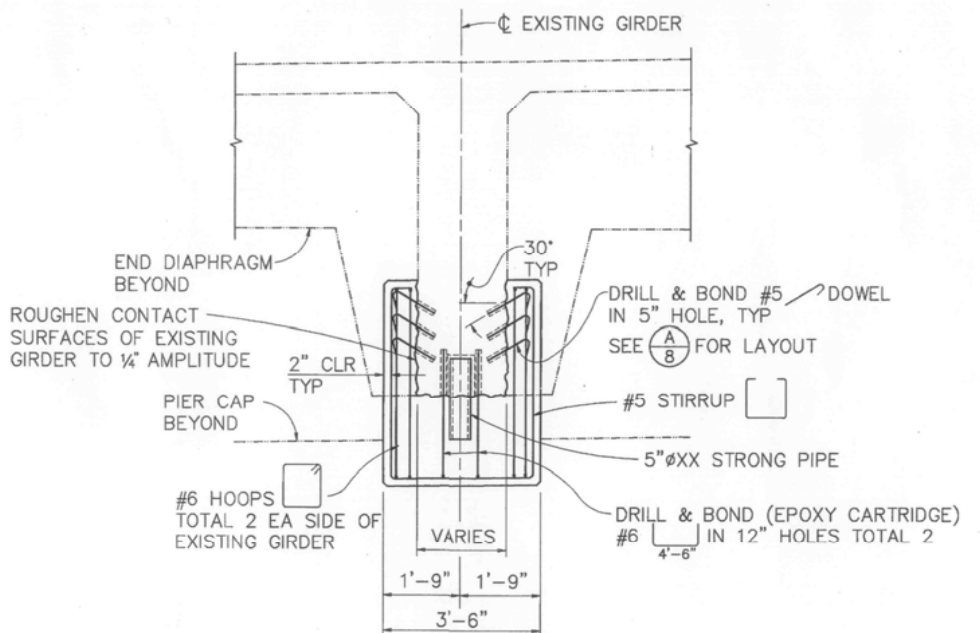
PLAN @ PIERS 3 & 5
3/8" = 1'-0"



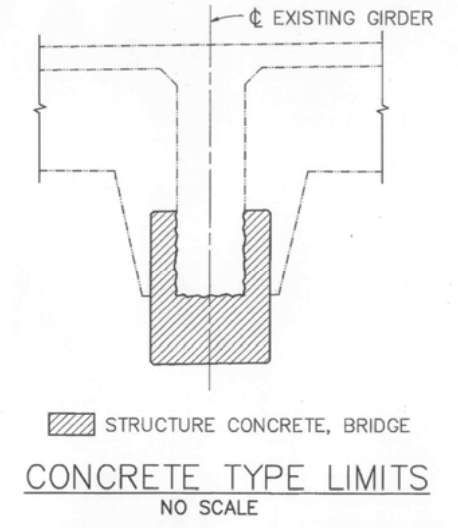
AMBIENT TEMPERATURE @ TIME OF PLACEMENT	10°F	36°F	62°F	89°F	115°F
DIMENSION 'A'	1"	3/4"	1/2"	1/4"	0

NOTE:
THE CONTRACTOR SHALL VERIFY ALL CONTROLLING FIELD DIMENSIONS BEFORE ORDERING OR FABRICATING ANY MATERIAL

SECTION A
1/2" = 1'-0"



SECTION B
1/2" = 1'-0"



AS BUILT
CORRECTIONS BY *Hemul Patel*
CONTRACT NO. *801-93/03-450914*
DATE *8-26-94*
NO CHANGES

Michael J. Lullian
 DESIGN OVERSIGHT
 1-11-93
 SIGN OFF DATE

DESIGN	BY T. L. SWAYZE	CHECKED J. K. NORRENA
DETAILS	BY T. L. SWAYZE	CHECKED S. A. METZLER
QUANTITIES	BY A. P. NOTARO	CHECKED T. C. RODDEN

PREPARED FOR THE
STATE OF CALIFORNIA
DEPARTMENT OF TRANSPORTATION

JOHN M. VINCENT
 PROJECT ENGINEER

BRIDGE NO.
 18-C012
 POST MILE
 LOCAL

SEISMIC RETROFIT PROJECT C22
FEATHER RIVER @ 5th STREET BRIDGE
LONGITUDINAL SHEAR BLOCK

ORIGINAL SCALE IN INCHES FOR REDUCED PLANS

CU 59M497-2
EA 03-EQC022

DISREGARD PRINTS BEARING EARLIER REVISION DATES

REVISION DATES (PRELIMINARY STAGE ONLY)	SHEET	OF
2/11/92, 5/24/92, 12/14/92	8	8